



LALIQUE

King Street · 15 May 2018

CHRISTIE'S



LALIQUE

TUESDAY 15 MAY 2018

AUCTION

Tuesday 15 May 2018
at 1.00 pm Lots 1-130
8 King Street, St. James's,
London SW1Y 6QT

AUCTION CODE AND NUMBER

In sending absentee bids or making enquiries, this sale should be referred to as **YESO-16016**

VIEWING

Saturday	12 May	12 noon - 5.00 pm
Sunday	13 May	12 noon - 5.00 pm
Monday	14 May	9.00 am - 4.30 pm
Tuesday	15 May	9.00 am - 11.00 am

AUCTIONEER

Nick Martineau

SERVICES

ABSENTEE AND TELEPHONE BIDS

Tel: +44 (0)20 7389 2658
Fax: +44 (0)20 7930 8870

AUCTION RESULTS

Tel: +44 (0)20 7839 9060
christies.com

CLIENT SERVICES

Tel: +44 (0)20 7839 9060
Fax: +44 (0)20 7389 2869
Email : info@christies.com

POST-SALE SERVICES

Ilaria Compagnoni
Post-Sale Coordinator
Payment, Shipping, and Collection
Tel: +44 (0)20 7752 3200
Fax: +44 (0)20 7752 3300
Email: PostSaleUK@christies.com

CONDITIONS OF SALE

This auction is subject to Important Notices, Conditions of Sale and to Reserves

BUYING AT CHRISTIE'S

For an overview of the process, see the Buying at Christie's section.

[15]

christies.com

Front cover: Lot 59
Opposite: Lot 54
Page 2: Lot 130
Page 102: Lot 101
Back cover: Lot 78



Browse this auction and view real-time results on your iPhone, iPod Touch, iPad and Android

These auctions feature

CHRISTIE'S LIVE

Bid live in Christie's salerooms worldwide
register at christies.com

View catalogues and leave bids online
at christies.com

CHRISTIE'S



SPECIALISTS FOR THIS AUCTION

SPECIALIST

Joy McCall
Senior Specialist
Tel: +44 (0)20 7752 3237

SALE COORDINATOR

Nicholas Challinor-Halford
Tel: +44 (0)20 7752 3382

EMAIL

First initial followed by last name
@christies.com
(eg. Nicholas Challinor-Halford =
nchallinorhalford@christies.com.)
For general enquiries about this
auction, emails should be addressed to
the sale coordinator.

INTERNATIONAL DEPARTMENT DESIGN

INTERNATIONAL HEAD

Sonja Ganne
Tel: +33 (0)1 40 76 86 21

EUROPEAN HEAD

Jeremy Morrison
Tel: +44 (0)20 7752 3274

INTERNATIONAL SPECIALIST

Simon Andrews
Tel: +44 (0)20 7752 3380

REGIONAL MANAGING DIRECTOR

Zoe Ainscough
Tel: +44 (0)20 7389 2950

HEAD OF SALE MANAGEMENT

Matthew Rigg
Tel +44 (0)20 7389 2221

WORLDWIDE

LONDON

Jeremy Morrison
Simon Andrews
Joy McCall
Tel: +44 (0)20 7752 3382

NEW YORK

Beth Vilinsky
Vanessa Booher
Tel: +1 212 636 2240

PARIS

Sonja Ganne
Pauline De Smedt
Flavien Gaillard
Tel: +33 (0)1 40 76 83 90

INTERNATIONAL CALENDAR DESIGN

LONDON

3 OCTOBER
UN/BREAKABLE

17 OCTOBER
HISTORICAL DESIGN

17 OCTOBER
DESIGN

13 NOVEMBER
LALIQUE

PARIS

22 MAY
DESIGN

20 NOVEMBER
DESIGN

NEW YORK

5 JUNE
DESIGN

13 DECEMBER
DESIGN

Subject to change.

13/04/18

COPYRIGHT NOTICE

No part of this catalogue may be reproduced, stored in a retrieval system or transmitted by any form or by any means, electronic, mechanical, photocopying, recording or otherwise, without the prior written permission of Christie's.
© COPYRIGHT, CHRISTIE, MANSON & WOODS LTD. (2018)

1

A PINSONS BOWL, NO. 10-386

DESIGNED 1933

electric blue

9¼ in. (23 cm.) diameter

engraved *R. Lalique France*

£3,500-4,000

\$5,000-5,600

€4,100-4,600



2

AN ESCARGOT VASE, NO. 931

DESIGNED 1920

electric blue

8 $\frac{3}{4}$ in. (21.3 cm.) high

moulded *R. LALIQUE* (twice), later
engraved *R. Lalique France*

£12,000-18,000

\$17,000-25,000

€14,000-21,000





3

3
A GRIGNON VASE, NO. 1086

DESIGNED 1932

deep amber and white stained
7 in. (17.8 cm.) high
stencilled *R. LALIQUE FRANCE*

£2,000–3,000

\$2,900–4,200

€2,300–3,400



4

4
A SAUGE VASE, NO. 935

DESIGNED 1923

deep amber
10½ in. (25.7 cm.) high
moulded *R. LALIQUE*,
engraved *R. Lalique France*

£3,000–5,000

\$4,300–7,100

€3,500–5,700

5

A PERRUCHES VASE, NO. 876

DESIGNED 1919

deep amber

10 $\frac{1}{8}$ in. (25.8 cm.) high

intaglio R. LALIQUE,

moulded R. LALIQUE

£12,000-18,000

\$17,000-25,000

€14,000-21,000



6

A MOINEAUX ATO TIMEPIECE, B

DESIGNED 1924

butterscotch

6 in. (15.3 cm.) high;

8½ in. (21.8 cm.) wide

moulded R. LALIQUE

£4,000-6,000

\$5,700-8,500

€4,600-6,900



7

AN ARCHERS VASE, NO. 893

DESIGNED 1921

cased pale butterscotch and
white stained

11 $\frac{1}{2}$ in. (28.8 cm.) high

moulded *R. LALIQUE*

£12,000-18,000

\$17,000-25,000

€14,000-21,000





8
**A PAIR OF ORMEAUX VASES,
NO. 984**

DESIGNED 1926

cased opalescent and blue stained
6¼ in (17.2 cm.) high
engraved *R. Lalique France No. 984* (2)

£2,000–3,000

\$2,900–4,200

€2,300–3,400



9
**A PAIR OF LAURIER VASES,
NO. 947**

DESIGNED 1922

opalescent and blue stained
7 in. (17.8 cm.) high
wheel-engraved *R. LALIQUE FRANCE,*
one engraved *No. 947* (2)

£2,000–3,000

\$2,900–4,200

€2,300–3,400

10
A CEYLAN VASE, NO. 905

DESIGNED 1924

opalescent and blue stained

9½ in. (24.2 cm.) high

wheel-engraved *R. LALIQUE FRANCE*,
engraved No. 905

£3,500–4,500

\$5,000–6,400

€4,100–5,200





11
AN ORNIS VASE, NO. 976

DESIGNED 1926

opalescent
7½ in. (19 cm.) high
wheel-engraved R. LALIQUE FRANCE

£1,500-2,500

\$2,200-3,500

€1,800-2,900



12
AN AVALLON VASE, NO. 986

DESIGNED 1927

opalescent
6¼ in. (15.9 cm.) high
engraved R. Lalique France No. 986

£1,500-2,500

\$2,200-3,500

€1,800-2,900

13

A PIVOINES VASE, NO. 10-908

DESIGNED 1937

opalescent

6¾ in. (17.2 cm.) high

stencilled R. LALIQUE FRANCE

£1,800–2,200

\$2,600–3,100

€2,100–2,500



14

A DANAIDES VASE, NO. 972

DESIGNED 1926

opalescent

7¼ in. (18.4 cm.) high

moulded R. LALIQUE

£4,000–6,000

\$5,700–8,500

€4,600–6,900



15

A DANAIDES VASE, NO. 972

DESIGNED 1926

clear, frosted and blue stained

7¼ in. (18.3 cm.) high

wheel-engraved *R. LALIQUE FRANCE*,
engraved *No. 972*

£2,000–3,000

\$2,900–4,200

€2,300–3,400



16

A SAUTERELLES VASE, NO. 888

DESIGNED 1912

clear and frosted, blue and green stained
10¾ in. (27.4 cm.) high
engraved *R. Lalique*

£4,000–6,000

\$5,700–8,500

€4,600–6,900





17

A SAUGE VASE, NO. 935

DESIGNED 1923

clear, frosted and blue stained
10 in. (25.5 cm.) high
moulded *R. LALIQUE*

£1,000–1,500

\$1,500–2,100

€1,200–1,700



18

A SOPHORA VASE, NO. 977

DESIGNED 1926

clear, frosted and blue stained
10 in. (25.4 cm.) high
engraved *R. Lalique France No. 977*

£3,000–5,000

\$4,300–7,100

€3,500–5,700

19

**A MONNAIE DU PAPE VASE,
NO. 897**

DESIGNED 1914

clear, frosted and blue stained
9 in. (22.8 cm.) high
intaglio *R. LALIQUE*

£1,800–2,200

\$2,600–3,100

€2,100–2,500



20

A MILAN VASE, NO. 1025

DESIGNED 1929

clear, frosted and blue stained
11 in. (28 cm.) high
stencilled *R. LALIQUE*

£3,000–5,000

\$4,300–7,100

€3,500–5,700





21
A SANGLIER CAR MASCOT,
NO. 1157

DESIGNED 1929

smoky

2¾ in. (7 cm.) high
stencilled *R. LALIQUE FRANCE*,
moulded *R. LALIQUE*

£1,000–1,500

\$1,500–2,100
€1,200–1,700

***22**
A PERCHE CAR MASCOT,
NO. 1158

DESIGNED 1929

butterscotch

6¼ in. (15.5 cm.) long
wheel-engraved *R. LALIQUE FRANCE*,
moulded *R. LALIQUE*

£1,800–2,200

\$2,600–3,100
€2,100–2,500



23
A GRENOUILLE CAR MASCOT,
NO. 1146

DESIGNED 1928

clear and frosted
2½ in. (6 cm.) high
engraved *R. Lalique France*

£6,000–8,000

\$8,500–11,000

€6,900–9,200





24

**A SAINT-CHRISTOPHE CAR
MASCOT, NO. 1142**

DESIGNED 1929

clear and frosted
4¾ in. (12 cm.) high

intaglio R. *LALIQUE FRANCE*

£1,000-1,500

\$1,500-2,100

€1,200-1,700

25

**A FAUCON CAR MASCOT,
NO. 1124**

DESIGNED 1925

clear and frosted
6¾ in. (17.2 cm.) high
moulded R. *LALIQUE*,
engraved *France No. 1124*

£1,800-2,200

\$2,600-3,100

€2,100-2,500



26

**A VITESSE CAR MASCOT,
NO. 1160**

DESIGNED 1929

clear, frosted and grey stained
7¼ in. (18.5 cm.) high
moulded *R. LALIQUE FRANCE*

£4,500-5,500

\$6,400-7,800

€5,200-6,300





27

AN ECUREUIL SEAL, NO. 227

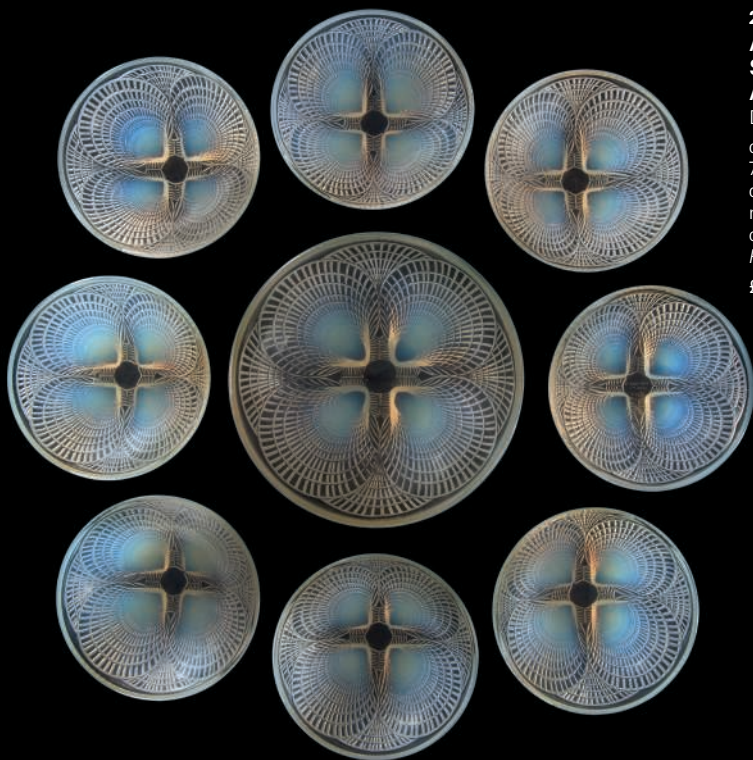
DESIGNED 1931

opalescent; together with a Pélican Seal, No. 222, designed 1931, clear and frosted, and a Victoire Seal, No. 210, designed 1920, clear, frosted and blue stained 4¼ in. (10.8 cm.) high and smaller former engraved *R. Lalique France* (3)

£1,800–2,200

\$2,600–3,100

€2,100–2,500



28

A COQUILLES BOWL AND EIGHT SMALLER BOWLS, NOS 3202 AND 3204

DESIGNED 1924

opalescent

7¼ in. (18.4 cm.) and 5½ in. (13 cm.)

diameter respectively

moulded *R. LALIQUE*,

one wheel-engraved *R. LALIQUE*

FRANCE, engraved No. 3204 (9)

£2,000–3,000

\$2,900–4,200

€2,300–3,400

29

**A PERCHE CAR MASCOT,
NO. 1158**

DESIGNED 1929

opalесcent

6¼ in. (15.9 cm.) long

wheel-engraved *R. LALIQUE FRANCE*,

moulded *R. LALIQUE FRANCE*

£1,200–1,800

\$1,700–2,500

€1,400–2,100



30

**TWO COQUILLES PLATES
AND SIX SMALLER, NOS 3009
AND 3013**

DESIGNED 1924

opalесcent

12 in. (30.6 cm.) and 6½ in. (16.5 cm.)

diameter respectively

wheel-engraved *R. LALIQUE FRANCE*,

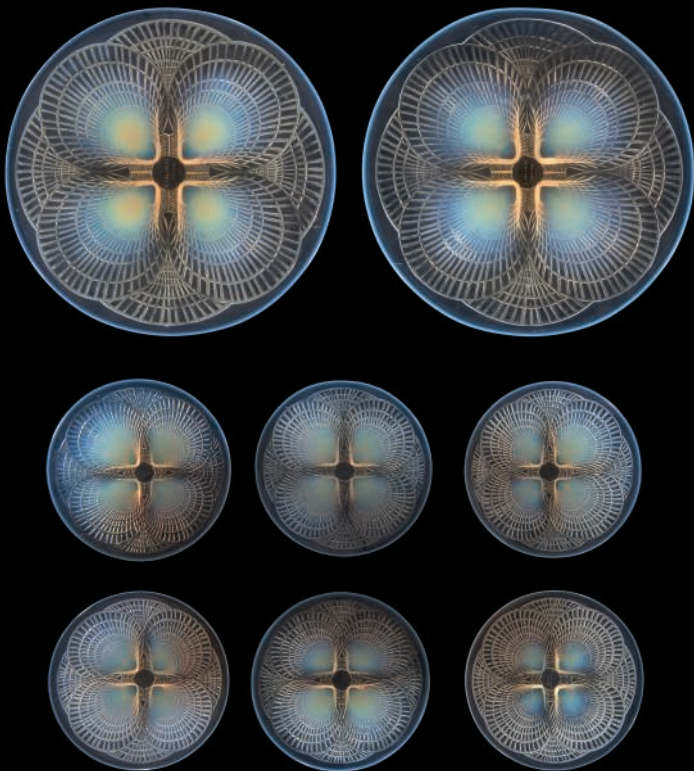
engraved No. 3009, one wheel-engraved
R. LALIQUE FRANCE, engraved No. 3013

(8)

£2,000–3,000

\$2,900–4,200

€2,300–3,400





31

A DAUPHINS PLATE, NO. 423

DESIGNED 1932

opalescent

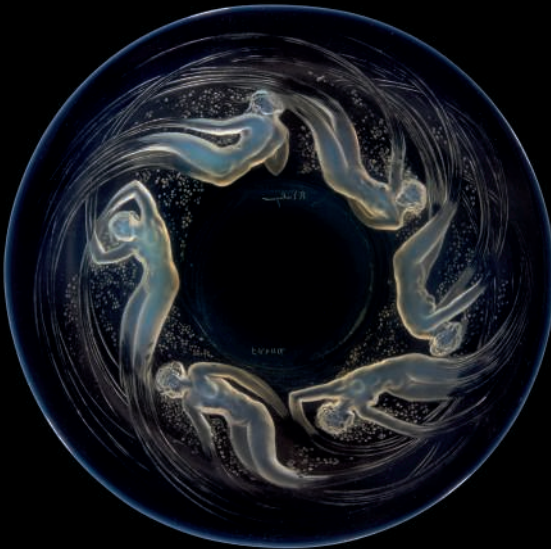
12¼ in. (31 cm.) diameter

stencilled *R. LALIQUE FRANCE*

£1,000-1,500

\$1,500-2,100

€1,200-1,700



32

AN ONDINES PLATE, NO. 3003

DESIGNED 1921

opalescent

11 in. (27.9 cm.) diameter

moulded *R. LALIQUE,*

engraved *R. Lalique France*

£1,200-1,800

\$1,700-2,500

€1,400-2,100

33

A ROSCOFF PLATE, NO. 10-383

DESIGNED 1932

opalescent

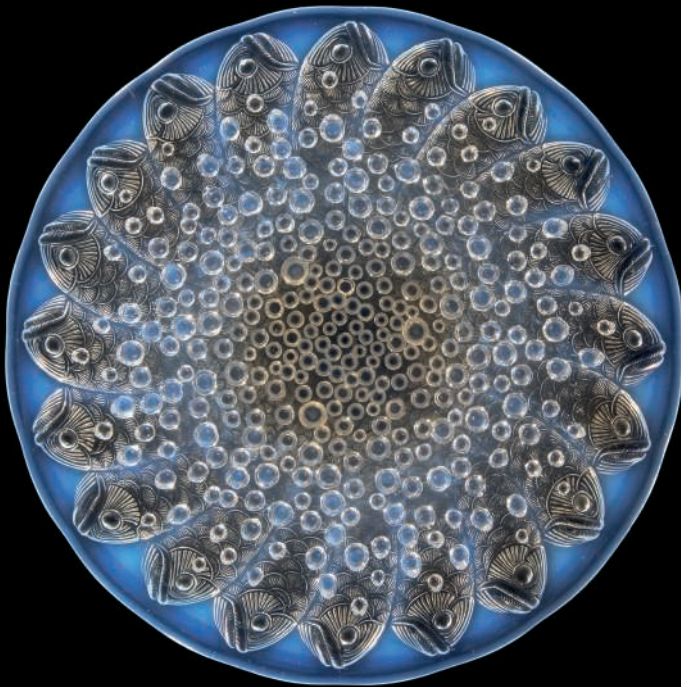
14 in. (35.5 cm.) diameter

engraved *R. Lalique France*

£1,500–2,500

\$2,200–3,500

€1,800–2,900



34

A MARTIGUES SHALLOW BOWL, NO. 377

DESIGNED 1920

opalescent

14 $\frac{1}{2}$ in. (36.5 cm.) diameter

wheel-engraved *R. LALIQUE FRANCE*,
engraved No. 377

£1,800–2,200

\$2,600–3,100

€2,100–2,500



35

AN ANVERS BOWL, NO. 408

DESIGNED 1930

opalescent

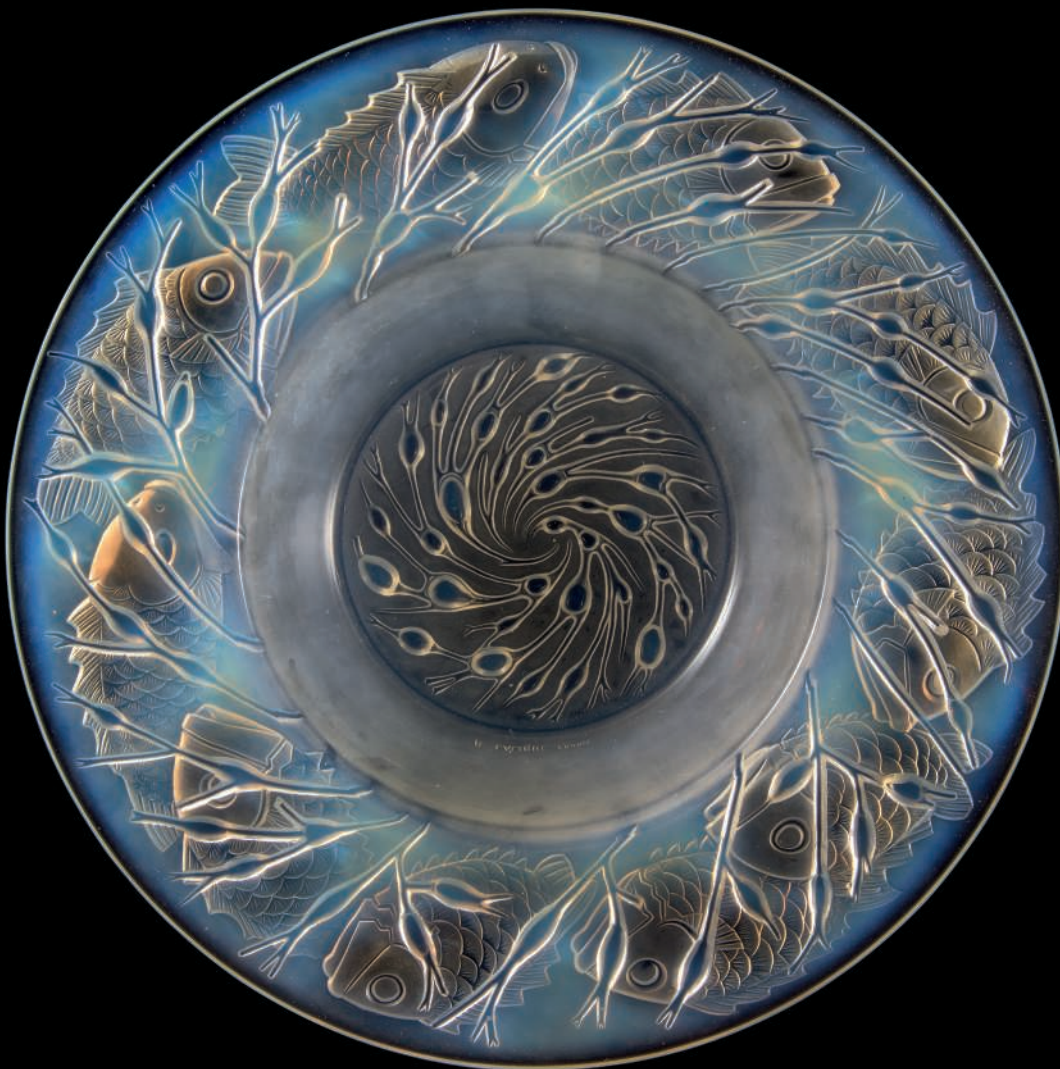
15½ in. (39.4 cm.) diameter

wheel-engraved R. LALIQUE FRANCE

£4,000–6,000

\$5,700–8,500

€4,600–6,900



36

A PHALENES BOWL, NO. 406

DESIGNED 1929

opalescent and blue stained

15¼ in. (38.7 cm.) diameter

wheel-engraved *R. LALIQUE FRANCE*

£4,000–6,000

\$5,700–8,500

€4,600–6,900



*** 37**

AN ELEPHANTS BOWL, NO. 411

DESIGNED 1930

clear and frosted

15¼ in. (38.5 cm.) diameter

wheel-engraved *R. LALIQUE FRANCE*

£10,000-15,000

\$15,000-21,000

€12,000-17,000



* 38

A TORTUES VASE, NO. 966

DESIGNED 1926

clear, frosted and sepia stained

10½ in. (26.2 cm.) high

intaglio R. *LALIQUE FRANCE*

£8,000-12,000

\$12,000-17,000

€9,200-14,000



39

**A TROIS PAPILLONS INKWELL,
NO. 426**

DESIGNED 1912

clear, frosted and sepia stained
3½ in. (9 cm.) wide
engraved *Lalique*

£1,200-1,800

\$1,700-2,500

€1,400-2,100



Δ40

**A TROIS SIRENES INKWELL,
NO. 435**

DESIGNED 1921

clear and frosted, and a later cover
9½ in. (24.1 cm.) diameter
moulded *R. LALIQUE*,
engraved *R. Lalique France*

£3,000–5,000

\$4,300–7,100

€3,500–5,700



41

**A MYOSOTIS, BOUCHON
FIGURINE NO. 3 SCENT BOTTLE,
NO. 613**

DESIGNED 1928

clear, frosted and sepia stained

9½ in. (23.2 cm.) high

engraved *R. Lalique No. 4*

£1,800–2,200

\$2,600–3,100

€2,100–2,500



42

AN ANEMONES MIRROR, C

DESIGNED 1913

clear and frosted, with white metal mount
and easel back

15¼ in. (38.7 cm.) diameter

£8,000–12,000

\$12,000–17,000

€9,200–14,000



43

**A COTY - 3 AMBRE ANTIQUE
SCENT BOTTLE**

DESIGNED 1910

clear, frosted and sepia stained

6 in. (15.2 cm.) high

intaglio *R. LALIQUE*

£1,000-1,500

\$1,500-2,100

€1,200-1,700



44

**A ROGER & GALLET - 6 NARKISS
SCENT BOTTLE**

DESIGNED 1912

clear, frosted and sepia stained

4 in. (10 cm.) high

intaglio *RL BREVETE*

£1,800-2,200

\$2,600-3,100

€2,100-2,500





45
A ROGER BOX, NO. 75

DESIGNED 1926

topaz and white stained
5¼ in. (13 cm.) diameter
moulded *LALIQUE*

£800-1,200

\$1,200-1,700
€920-1,400



46
A ROGER BOX, NO. 75

DESIGNED 1926

clear, frosted and black enameled
5¼ in. (13 cm.) diameter
moulded *LALIQUE*

£800-1,200

\$1,200-1,700
€920-1,400

47

**AD'ORSAY - 4
AMBRE SCENT BOTTLE**

DESIGNED 1912

black and white stained

5¼ in. (13 cm.) high

moulded *LALIQUE AMBRE D'ORSAY*

£1,000-1,500

\$1,500-2,100

€1,200-1,700



48

**A ROGER ET GALLET - 15
LE JADE SCENT BOTTLE**

DESIGNED 1926

jade

bottle 3¼ in. (8.3 cm.) high

moulded *RL FRANCE, LE JADE*,

intaglio *ROGER ET GALLET PARIS*

£1,500-2,500

\$2,200-3,500

€1,800-2,900





49

**A L. T. PIVERS - 4
MISTI SCENT BOTTLE**

DESIGNED 1912

clear, frosted and blue stained
3 $\frac{3}{8}$ in. (8 cm.) high
stencilled *Misti L T Pivers PARIS*

£1,000–1,500

\$1,500–2,100

€1,200–1,700



50

**A MOLINARD - 6
CALENDAL SCENT BOTTLE**

DESIGNED 1937,
EXECUTED POST-WAR

clear and frosted, sealed with contents
4 $\frac{3}{4}$ in. (12 cm.) high
engraved *Lalique Molinard Made in
France*, paper label *Calendal Molinard
Grasse Paris*

£1,200–1,800

\$1,700–2,500

€1,400–2,100

51

**AN AMELIE SCENT BOTTLE,
NO. 520**

DESIGNED 1927

clear, frosted and blue stained
3 in. (7.6 cm.) high
engraved *R. Lalique France No. 520*,
moulded *R. LALIQUE FRANCE*

£1,000–1,500

\$1,500–2,100

€1,200–1,700



52

**A SIRENES BRULE-PARFUMS
AND COVER, NO. 2651**

DESIGNED 1920

clear, frosted and blue stained
7 in. (17.8 cm.) high
moulded *R. LALIQUE*

£1,500–2,000

\$2,200–2,800

€1,800–2,300



53

**A COTY - 3
AMBRE ANTIQUE SCENT BOTTLE**

DESIGNED 1910

clear, frosted and sepia stained

6¼ in. (15.9 cm.) high

moulded *R. LALIQUE*

£1,000-1,500

\$1,500-2,100

€1,200-1,700



54

A FORVIL - 3
LE ROUGE CORAIL SCENT BOTTLE
DESIGNED 1922

clear, frosted and red enamelled
4 in. (10.3 cm.) high
intaglio *LE ROUGE CORAIL FORVIL*,
moulded *R. LALIQUE PARIS FRANCE*

£3,000-5,000

\$4,300-7,100

€3,500-5,700



55

A HELENE TIMEPIECE, NO. 736

DESIGNED 1931

clear and frosted

8¾ in. (22.2 cm.) high

later engraved *R. Lalique*

£10,000-15,000

\$15,000-21,000

€12,000-17,000



56

A THAIS STATUETTE, NO. 834

DESIGNED 1925

clear and frosted
8½ in. (21.6 cm.) high
engraved *R. Lalique*

£6,000–8,000

\$8,500–11,000

€6,900–9,200





57
A VOILEE MAINS JOINTES
STATUETTE, NO. 828
DESIGNED 1919

opalescent
10¾ in. (27.3 cm.) high
£10,000–15,000 \$15,000–21,000
 €12,000–17,000

58
A SUZANNE STATUETTE,
NO. 833
DESIGNED 1925

opalescent, on an illuminating stained
wood base
11¼ in. (28.5 cm.) high
engraved *R. Lalique France*,
moulded *R. LALIQUE*
£15,000–20,000 \$22,000–28,000
 €18,000–23,000



*59

**A RARE YESO SURTOUT,
NO. 1170**

DESIGNED 1930

clear and frosted, on an illuminating
chromed base

13¼ in. (33.5 cm.) high;

20½ in. (52.1 cm.) long

stencilled *R. LALIQUE*

£30,000-50,000

\$43,000-71,000

€35,000-57,000





60

**A FOUGERES EIGHT-BRANCH
CHANDELIER, NO. 2270**

DESIGNED 1924

clear, frosted and sepia stained

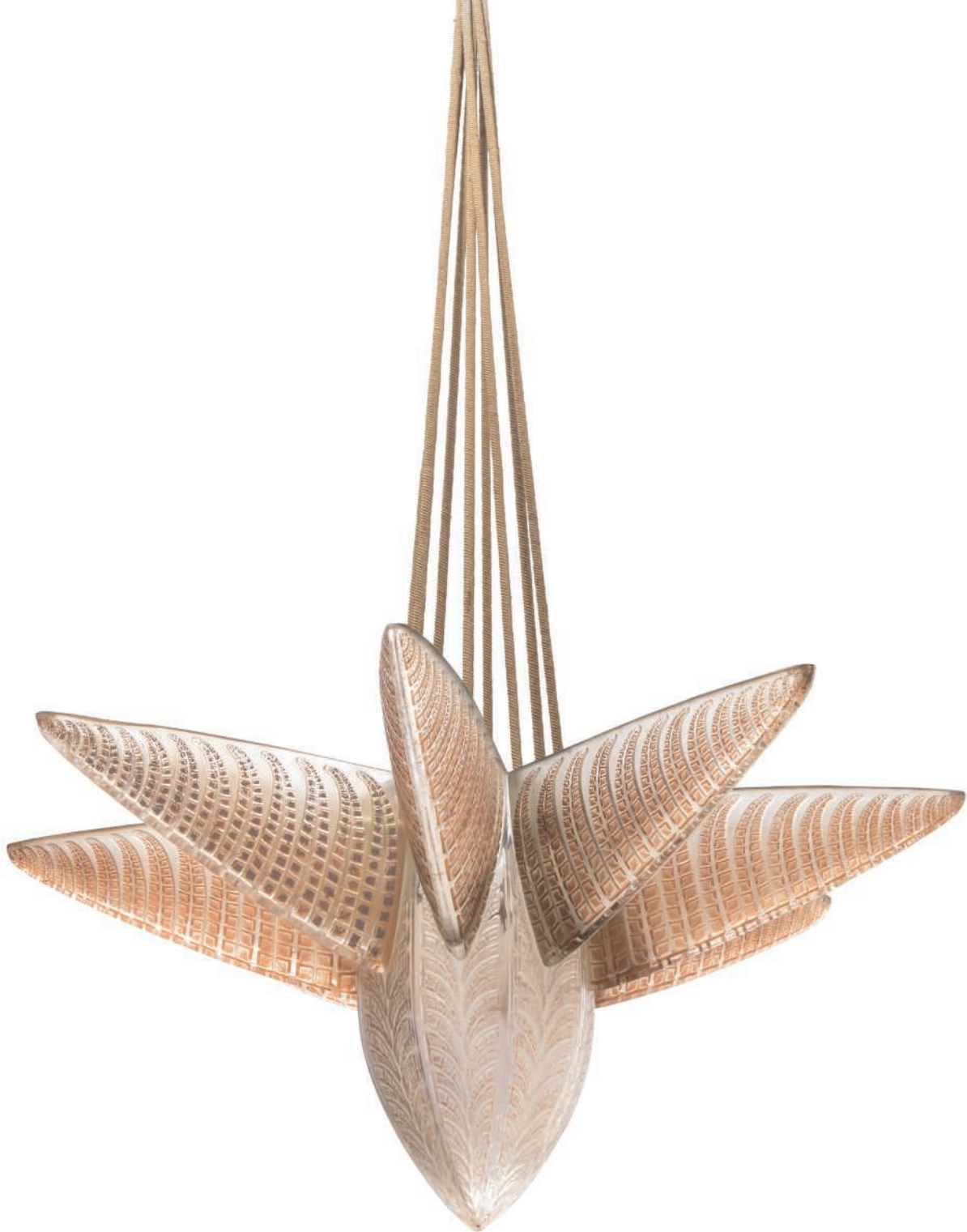
51½ in. (130.9 cm.) high;

31½ in. (80 cm.) diameter

£18,000–22,000

\$26,000–31,000

€21,000–25,000





61

**A SOLEIL PLAFONNIER,
NO. 2466**

DESIGNED 1926

clear and frosted, with a clear and frosted
ceiling rose

12 in. (30.5 cm.) diameter

£2,000–3,000

\$2,900–4,200

€2,300–3,400



62
AN EGLANTINES PLAFONNIER,
NO. 2464

DESIGNED 1926

clear and frosted, with ceiling rose

23 in. (58.4 cm.) high;

26¼ in. (66.5 cm.) diameter

£10,000–15,000

\$15,000–21,000

€12,000–17,000

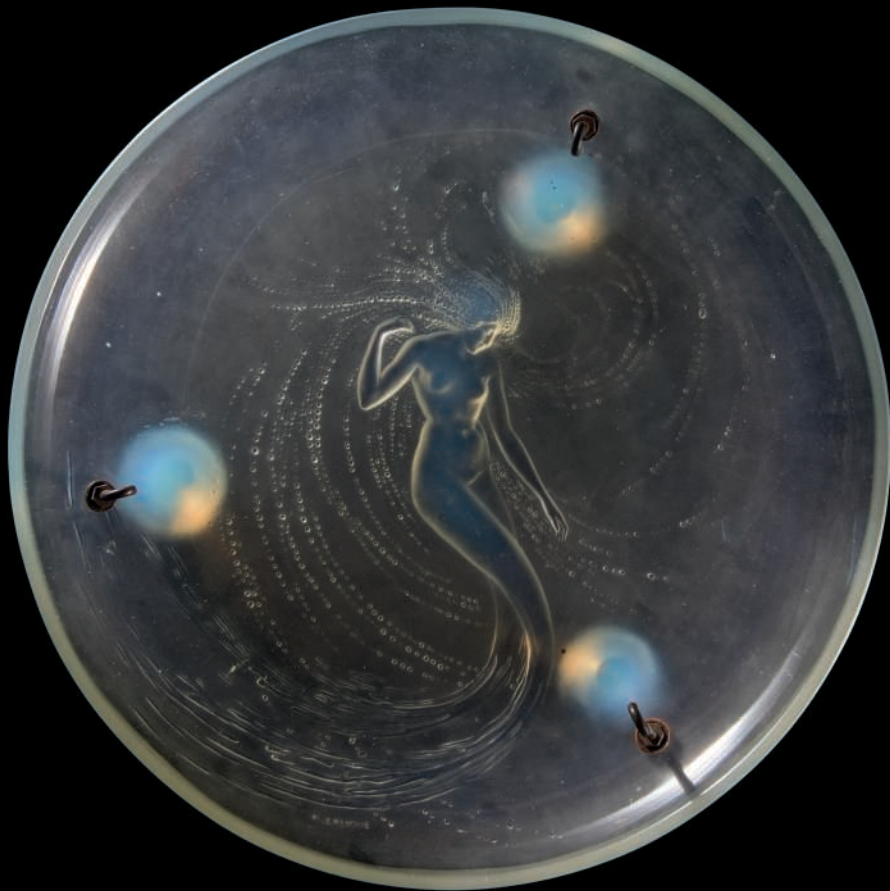


Δ 63
A SOLEIL PLAFONNIER,
NO. 2466
DESIGNED 1926

opalescent, with a clear and frosted
ceiling rose
12¼ in. (31.8 cm) diameter
wheel-engraved *R. LALIQUE FRANCE*

£3,000–5,000

\$4,300–7,100
€3,500–5,700



64
A SIRENE BOWL, NO. 376
DESIGNED 1920

adapted as a light fitting, opalescent
14½ in. (36.9 cm.) diameter
moulded *R. LALIQUE*

£5,000-7,000

\$7,100-9,900

€5,800-8,000

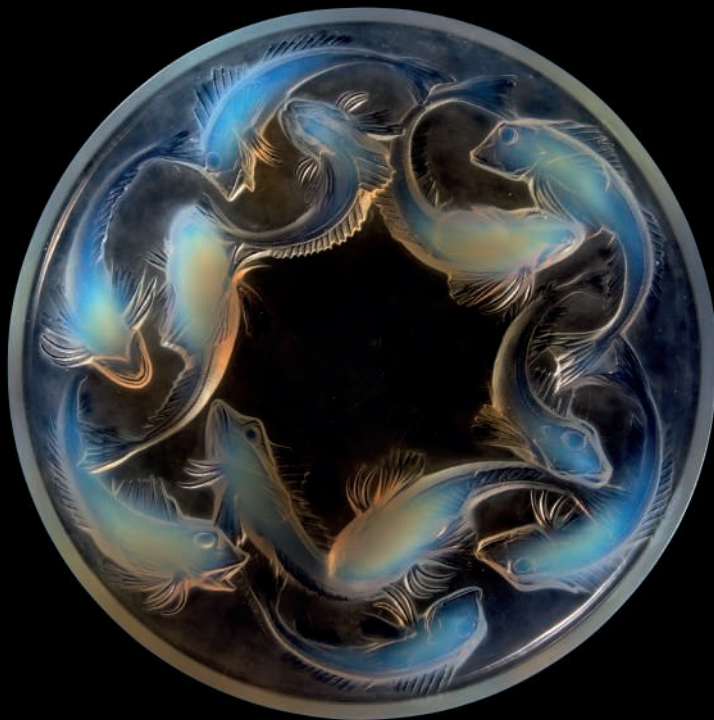


65
A CALYPSO BOWL, NO. 10-381
DESIGNED 1932

opalescent
11 $\frac{1}{8}$ in. (30 cm.) diameter
stencilled *R. LALIQUE FRANCE*

£2,200-2,800

\$3,200-4,000
€2,600-3,200

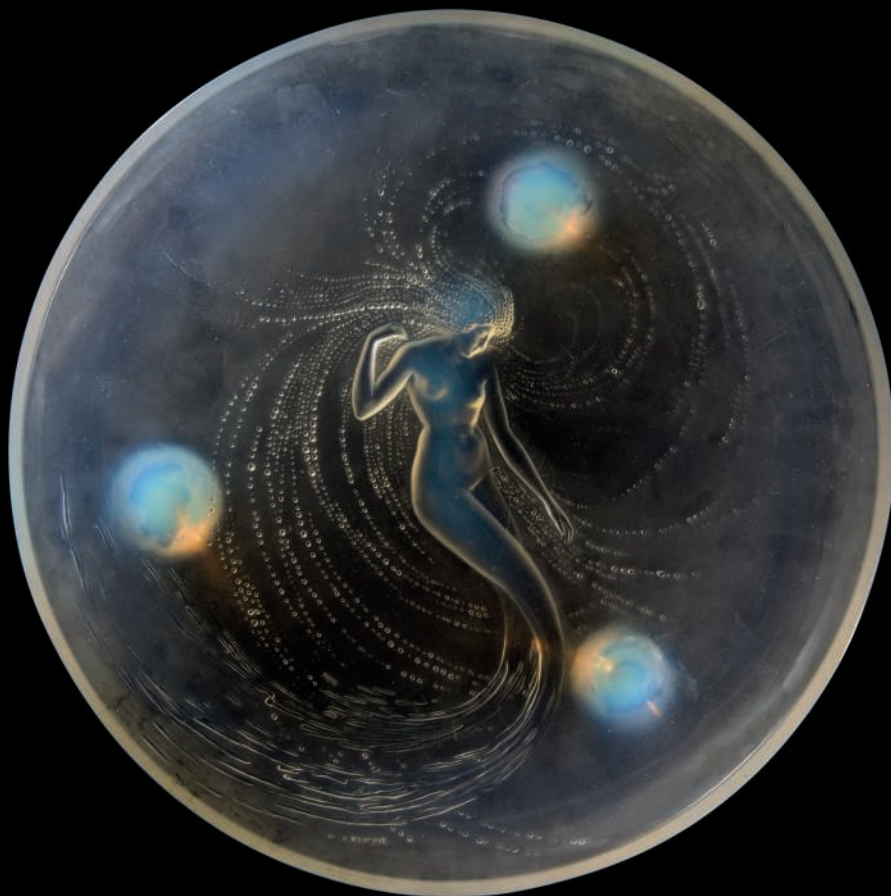


66
A MARTIGUES BOWL, NO. 377
DESIGNED 1920

opalescent
14 $\frac{1}{8}$ in. (36.5 cm.) diameter
moulded *R. LALIQUE*,
wheel-engraved *FRANCE*

£1,800-2,200

\$2,600-3,100
€2,100-2,500



67
A SIRENE BOWL, NO. 376
DESIGNED 1920

opalescent
14½ in. (36.9 cm.) diameter
moulded *R. LALIQUE*

£4,000–6,000

\$5,700–8,500
€4,600–6,900

* 68

A BISKRA VASE, NO. 1078

DESIGNED 1932

sapphire blue and white stained

11½ in. (29.3 cm.) high

stencilled R. LALIQUE FRANCE

£3,000-5,000

\$4,300-7,100

€3,500-5,700

PROVENANCE:

Sotheby's New York, *Important Lalique*
from the Collection of Marvin Kagan and
Diane Austin, 1 December 1995, lot 34.



69

AN ANGES BOWL, NO. 410

DESIGNED 1930

sapphire blue

14½ in. (36 cm.) diameter

stencilled *R. LALIQUE FRANCE*

£5,000–8,000

\$7,100–11,000

€5,800–9,200



***70**

A THIBET VASE, NO. 1083

DESIGNED 1931

sapphire blue

8 in. (20.3 cm.) high

stencilled *R. LALIQUE FRANCE*

£5,000-8,000

\$7,100-11,000

€5,800-9,200



*71

A LANGUEDOC VASE, NO. 1021

DESIGNED 1929

green

8 $\frac{3}{8}$ in. (22.4 cm.) high

engraved *R. Lalique France*

£15,000-25,000

\$22,000-35,000

€18,000-29,000





72
A PAQUETTES VASE,
NO. 10-877

DESIGNED 1934

clear, frosted and grey stained
7¼ in. (18.5 cm.) high
stencilled *R. LALIQUE FRANCE*

£1,000–1,500

\$1,500–2,100
€1,200–1,700



***73**

A SOUSTONS VASE, NO. 10-902

DESIGNED 1935

clear, frosted and black enamelled
9½ in. (23.2 cm.) high
stencilled *R. LALIQUE*, engraved *France*

£4,000–6,000

\$5,700–8,500
€4,600–6,900

74

A THIBET VASE, NO.1083

DESIGNED 1931

clear, frosted and grey stained

8 in. (20.4 cm.) high

stencilled *R. LALIQUE FRANCE*

£1,200–1,800

\$1,700–2,500

€1,400–2,100



75

AN ANTILOPES VASE, NO. 875

DESIGNED 1925

clear, frosted and black stained

10½ in. (27 cm.) high

engraved *Lalique France*

£1,500–3,000

\$2,200–4,200

€1,800–3,400



76

A DOMREMY VASE, NO. 979

DESIGNED 1926

clear, frosted and grey stained

8¼ in. (21 cm.) high

engraved *R. Lalique France*

£1,000-1,500

\$1,500-2,100

€1,200-1,700



77

A SOPHORA VASE, NO. 977

DESIGNED 1926

grey and white stained
10½ in. (26.3 cm.) high
moulded *R. LALIQUE*

£4,000-6,000

\$5,700-8,500

€4,600-6,900



78

A RARE SENLIS VASE, NO. 962

DESIGNED 1925

smoky, with patinated bronze handles
modelled as leaf fronds and berries
10¾ in. (26.4 cm.) high
stencilled *R. LALIQUE FRANCE*

£40,000–60,000	\$57,000–85,000
	€46,000–69,000

This present design is one of only two vases created by René Lalique to incorporate bronze handles. It has bifurcated handles modelled as branches of foliage and fruits which are supported on the shoulders of the vase and do not in fact connect to the rim but rather frame it.





79
**A CLAIRVAUX FOOTED BOWL,
NO. 387**

DESIGNED 1926

smoky and black enamelled
8¾ in. (22.2 cm.) high
engraved *R. Lalique France*

£1,000–1,500

\$1,500–2,100
€1,200–1,700



***80**
A SAINT-DENIS BOWL, NO. 388

DESIGNED 1926

smoky and black enamelled
6¾ in. (17.2 cm.) high
engraved *R. Lalique France No. 387 (sic)*

£1,000–1,500

\$1,500–2,100
€1,200–1,700

81

A BEAUTREILLIS VASE, NO. 989

DESIGNED 1927

smoky

5¾ in. (14.6 cm.) high

wheel-engraved *R. LALIQUE FRANCE*,
engraved No. 989

£1,200–1,800

\$1,700–2,500
€1,400–2,100



82

AN ALBERT VASE, NO. 958

DESIGNED 1925

topaz

6¾ in. (17.2 cm.) high

moulded *R. LALIQUE*,
wheel-engraved *FRANCE*

£1,500–2,500

\$2,200–3,500
€1,800–2,900





*** 83**

**A GRAND CYPRINS BOX
AND COVER, NO. 42**

DESIGNED 1921

opalescent
10¼ in. (26 cm.) diameter
moulded *R. LALIQUE*

£1,000–1,500

\$1,500–2,100
€1,200–1,700



84

**A DEUX SIRENES BOX
AND COVER, NO. 43**

DESIGNED 1921

opalescent
10 in. (25.4 cm.) diameter
moulded *R. LALIQUE*

£1,200–1,800

\$1,700–2,500
€1,400–2,100

85

**A MUGUET SHALLOW BOWL,
NO. 416**

DESIGNED 1931

opalescent

12 $\frac{1}{2}$ in. (31.5 cm.) diameter

stencilled *R. LALIQUE FRANCE*

£1,200–1,800

\$1,700–2,500

€1,400–2,100



86

**A PERRUCHES BOWL,
NO. 419**

DESIGNED 1931

opalescent and blue stained

9 $\frac{1}{2}$ in. (25.1 cm.) diameter

stencilled *R. LALIQUE FRANCE*

£3,000–5,000

\$4,300–7,100

€3,500–5,700



87

**A MONTMORENCY VASE,
NO. 1050**

DESIGNED 1930

opalescent and blue stained
8 in. (20.3 cm.) high
stencilled *R. LALIQUE FRANCE*

£3,000-5,000

\$4,300-7,100

€3,500-5,700



88

**A PRUNES VASE,
NO. 1037**

DESIGNED 1930

opalescent and blue stained

7 in. (17.8 cm.) high

wheel-engraved R. *LALIQUE FRANCE*

£6,000–8,000

\$8,500–11,000

€6,900–9,200





89

A RAMPILLON VASE, NO. 991

DESIGNED 1927

opalescent

5 in. (12.6 cm.) high

wheel-engraved *R. LALIQUE FRANCE*

£1,000–1,500

\$1,500–2,100

€1,200–1,700



90

A BEAUTREILLIS VASE, NO. 989

DESIGNED 1927

opalescent and blue stained

5¾ in. (14.6 cm.) high

stencilled *R. LALIQUE FRANCE*

£1,000–1,500

\$1,500–2,100

€1,200–1,700

91

A SPIRALES VASE, NO. 1060

DESIGNED 1930

opalесcent

6¾ in. (17.2 cm.) high

stencilled *R. LALIQUE FRANCE*

£1,500–2,500

\$2,200–3,500

€1,800–2,900



92

**A GUIRLANDES VASE,
NO. 10-887**

DESIGNED 1935

opalесcent

8¾ in. (21.2 cm.) high

stencilled *R. LALIQUE FRANCE*

£1,200–1,800

\$1,700–2,500

€1,400–2,100





93

AN OURSINS VASE, NO. 10-888

DESIGNED 1935

clear, frosted and blue stained
7 $\frac{3}{4}$ in. (18.8 cm.) high
stencilled R. LALIQUE FRANCE

£1,000-1,500

\$1,500-2,100

€1,200-1,700



94

**A BAMMAKO VASE,
NO. 10-882**

DESIGNED 1934

clear, frosted and blue stained
7 $\frac{1}{4}$ in. (18.5 cm.) high
stencilled R. LALIQUE FRANCE

£1,000-1,500

\$1,500-2,100

€1,200-1,700

95

A SPIRALES VASE, NO. 1060

DESIGNED 1930

clear, frosted and blue stained

6½ in. (16.5 cm.)

stencilled *R. LALIQUE*

£1,000–1,500

\$1,500–2,100

€1,200–1,700



96

**A QUATRE PANNEAUX VASE,
NO. 10-920**

DESIGNED 1938

clear, frosted and blue stained

7½ in. (19.1 cm.) high

stencilled *R. LALIQUE FRANCE*

£1,200–1,800

\$1,700–2,500

€1,400–2,100



97

AN ARCHERS VASE, NO. 893

DESIGNED 1921

clear, frosted and blue stained

10½ in. (26.8 cm.) high

engraved *R. Lalique France No. 893*

£3,000–5,000

\$4,300–7,100

€3,500–5,700



98

A SAUTERELLES VASE, NO. 888

DESIGNED 1912

clear, frosted, blue and green stained

10 $\frac{1}{8}$ in. (27.5 cm.) high

stencilled *R. LALIQUE FRANCE*

£6,000–8,000

\$8,500–11,000

€6,900–9,200



99

**A JAFFA TRAY AND GLASSES,
NO. 3680**

DESIGNED 1931

amber

tray - 16 $\frac{3}{4}$ in. (42.5 cm.) diameter

glasses - 2 in. (5.1 cm.) high

stencilled *R. LALIQUE* (11)

£1,500-2,500

\$2,200-3,500

€1,800-2,900



100
A BAHIA TRAY AND GLASSES,
NO. 3683

DESIGNED 1931

clear and frosted
tray - 16¾ in. (42.5 cm.) diameter
glasses - 5 in. (12.7 cm.) high
stencilled *R. LALIQUE*, some glasses
with *FRANCE* (9)

£1,500-2,500

\$2,200-3,500

€1,800-2,900



101

**A UNIQUE SIX TETES CARAFE
AND STOPPER, NO. 3159**

DESIGNED 1914

clear, frosted and grey stained

13 $\frac{7}{8}$ in. (35.4 cm.) high

intaglio *LALIQUE*

£4,000–6,000

\$5,700–8,500

€4,600–6,900



*102

**A RARE OREILLES GRAVEES
CARAFE, NO. 3015**

DESIGNED 1911

clear and frosted
12¼ in. (31 cm.) high
engraved *Lalique*

£10,000-15,000

\$15,000-21,000

€12,000-17,000





103
**A RHODES ISOTHERMIC ICE
BUCKET, NO. 11964**

DESIGNED POST-WAR

clear and frosted, with insulated liner and
white metal handle
9 in. (22.9 cm.) high
engraved *Lalique France* (3)

£1,500–2,500

\$2,200–3,500

€1,800–2,900

104
A PIERREFONDS VASE, NO. 990

DESIGNED 1926,
EXECUTED POST-WAR

clear and frosted
6 in. (15.3 cm.) high; 13 in. (33 cm.) wide
later stencilled *R. LALIQUE*

£2,500–3,500

\$3,600–4,900

€2,900–4,000



105

**A PAIR OF RAMEAUX
CANDLEHOLDERS, NO. 2122**

DESIGNED 1934

clear and frosted

8 in. (17.2 cm.) high

stencilled *R. LALIQUE FRANCE* (2)

£1,000–1,500

\$1,500–2,100

€1,200–1,700



106

**A PAIR OF PAQUERETTES
CANDLESTICKS, NO. 2123**

DESIGNED 1935

clear, frosted and sepia stained

9½ in. (23.2 cm.) high

stencilled *R. LALIQUE FRANCE* (2)

£1,800–2,200

\$2,600–3,100

€2,100–2,500



107

A VIBRATIONS VASE

DESIGNED POST-WAR

*number 230 from an edition of 999,
clear, frosted and black enamelled,
boxed with certificate
11¼ in. (29.9 cm.) high
engraved Lalique France 230/999*

£2,500-3,500

\$3,600-4,900

€2,900-4,000





This work is being sold to benefit the Friends of Kayany, a U.S. public charity that supports schools for Syrian refugee children in Lebanon. Working closely with the Kayany Foundation, Friends of Kayany has helped provide schooling for more than 3,500 refugee children living in Informal Tented Settlements. These schools provide education, crucial nutritional support, clothing and medical aid to some of the most vulnerable children in the world.

SYRI-ARTS:
SAVING A GENERATION THROUGH EDUCATION

108

MARIO BOTTA (B. 1943)

A GEO VASE

DESIGNED 2016

*number 42 from an edition of 250,
clear and frosted,
boxed with a certificate of authenticity
12 $\frac{1}{8}$ in. (32.5 cm.) high
engraved *Lalique France 042/250*
Mario Botta*

£3,000–5,000

\$4,300–7,100

€3,500–5,700

PROVENANCE:

Donated by Lalique.



VARIOUS PROPERTIES

109

A POSEIDON VASE

DESIGNED 2004

number 35 from an edition of 99,

clear, frosted and aquamarine

11¼ in. (29.9 cm.) high

engraved *Lalique France 35/99*

£2,200-2,800

\$3,200-4,000

€2,600-3,200



*110

**A MONUMENTAL
ANGÉLIQUE VASE**

DESIGNED POST-WAR

clear and frosted,
with white metal top rim
21¼ in. (54 cm.) high
engraved *Lalique France 218*

£1,800–2,200

\$2,600–3,100

€2,100–2,500





111
A COQ ET PLUMES VASE,
NO. 1033

DESIGNED 1928

clear, frosted and blue stained

6¼ in. (15.8 cm.) high

wheel-engraved *R. LALIQUE FRANCE*

£1,000–1,500

\$1,500–2,100

€1,200–1,700

112
A SAINT-HUBERT JARDINIÈRE,
NO. 3461

DESIGNED 1927

clear, frosted and blue stained

18¾ in. (47.6 cm.) long

stencilled *R. LALIQUE FRANCE*

£2,500–3,500

\$3,600–4,900

€2,900–4,000



113

**AN OISEAUX AUX EPIS GRAVES
VASE, NO. 10-930**

DESIGNED 1938

clear, frosted and blue stained

8¼ in. (21 cm.) high

stencilled *R. LALIQUE FRANCE*

£1,500–2,500

\$2,200–3,500

€1,800–2,900



114

**A BORDURE BLUETS VASE,
NO. 907**

DESIGNED 1913

clear, frosted and blue stained

6¾ in. (17.2 cm.) high

wheel-engraved *R. LALIQUE*,
engraved *France*

£1,000–1,500

\$1,500–2,100

€1,200–1,700





115

A GRAINES VASE, NO. 1042

DESIGNED 1930

opalescent and blue stained
8 in (20.2 cm.) high
stencilled *R. LALIQUE FRANCE*

£2,500-3,500

\$3,600-4,900

€2,900-4,000



116

A PINSONS VASE, NO. 1038

DESIGNED 1930

opalescent and blue stained
7½ in. (19 cm.) high
stencilled *R. LALIQUE*

£2,500-3,500

\$3,600-4,900

€2,900-4,000

117

A SOUCIS VASE, NO. 1039

DESIGNED 1930

cased opalescent and blue stained
7 in. (17.8 cm.) high
engraved *R. Lalique France*

£3,000-5,000

\$4,300-7,100

€3,500-5,700



118

**A FONTAINEBLEU VASE,
NO. 1036**

DESIGNED 1930

cased opalescent and blue stained
7 in. (17.8 cm.) high
stencilled *R. LALIQUE,*
engraved *France*

£3,000-5,000

\$4,300-7,100

€3,500-5,700



*119

A SAUTERELLES VASE, NO. 888

DESIGNED 1912

cased opalescent and white stained

10½ in. (26.6 cm.) high

wheel-engraved R. *LALIQUE*

£8,000-12,000

\$12,000-17,000

€9,200-14,000



120

A PICARDIE VASE, NO. 1006

DESIGNED 1927

cased opalescent and blue stained

9½ in. (24.2 cm.) high

engraved *R. Lalique France No. 1006*

£15,000–20,000

\$22,000–28,000

€18,000–23,000



121

A RONCE VASE, NO. 946

DESIGNED 1921

cased butterscotch and grey stained

9 in. (22.8 cm.) high

engraved *Lalique*

£4,000–6,000

\$5,700–8,500

€4,600–6,900



122

AN ARCHERS VASE, NO. 893

DESIGNED 1921

cased butterscotch and grey stained

10½ in. (26.6 cm.) high

moulded *R. LALIQUE*

£12,000-15,000

\$17,000-21,000

€14,000-17,000





123

A BEAUTREILLIS VASE, NO. 989

DESIGNED 1927

amber

5¾ in. (14.6 cm.) high

wheel-engraved *R. LALIQUE FRANCE*

£1,800–2,200

\$2,600–3,100

€2,100–2,500



***124**

AN AVALLON VASE, NO. 986

DESIGNED 1927

amber

5¾ in. (15 cm.) high

wheel-engraved *R. LALIQUE FRANCE*

£3,000–5,000

\$4,300–7,100

€3,500–5,700

125

A GUI VASE, NO. 948

DESIGNED 1920

cased pale yellow-butterscotch

6¾ in. (17.2 cm.) high

intaglio R. LALIQUE

£1,800–2,200

\$2,600–3,100

€2,100–2,500



126

A DAVOS VASE, NO. 1079

DESIGNED 1932

alexandrite

11 in. (28 cm.) high

stencilled R. LALIQUE FRANCE

£3,000–5,000

\$4,300–7,100

€3,500–5,700

Alexandrite glass is dichroic and changes colour under different lighting conditions.





127

ALE MANS VASE, NO. 1074

DESIGNED 1931

cased peppermint green

4 in. (10.2 cm.) high

stencilled *R. LALIQUE FRANCE*

£2,000–2,500

\$2,900–3,500

€2,300–2,900



128

AN ORMEAUX VASE, NO. 984

DESIGNED 1926

cased jade green and grey stained

6¾ in. (17.2 cm.) high

engraved *R. Lalique France No. 984*

£3,000–5,000

\$4,300–7,100

€3,500–5,700

129

**A GROS SCARABEES VASE,
NO. 892**

DESIGNED 1923

double cased jade green and
white stained

11½ in. (29 cm.) high

engraved *R. Lalique France, No. 892*

£25,000–35,000

\$36,000–49,000

€29,000–40,000



130
**A UNIQUE CLÉMATITES,
FEUILLES EN CREUX, FLEURS
EN RELIEF CIRE PERDUE VASE,
NO. CP 232**

DESIGNED 1920

blue-grey stained
6¾ in. (16.3 cm.) high
*wheel-engraved R. LALIQUE,
incised 138-20*

£50,000–70,000 \$71,000–99,000
€58,000–80,000

The present lot conveys some of the most distinctive aspects of Lalique's style: his artistic talent for stylised naturalistic elements and his flair for composition. The elaborate floral and foliage motif on the piece is enhanced by the delicate staining and echoes *Japonisme* influences. René Lalique's knowledge and admiration for nature is evident in his Art Nouveau period, but he continued to develop his interest and love of naturalistic motifs throughout his entire career.

This lot is illustrated in F. Marcilhac, *René Lalique: Catalogue Raisonné de l'Oeuvre de Verre*, Paris, 1994, p. 1013, fig. CP 232.

END OF SALE



INDEX

- A**
Albert, 82
Ambre, 47
Ambre Antique, 43, 53
Amélie, 51
Anémones, 42
Angélique, 110
Anges, 69
Antilopes, 75
Anvers, 35
Archers, 7, 97, 122
Avallon, 12, 124
- B**
Bahia, 100
Bammako, 94
Beautreillis, 81, 90, 123
Biskra, 68
Bordure Bluets, 114
- C**
Calendal, 50
Calyso, 65
Ceylan, 10
Clairvaux, 79
Clématites, Feuilles en Creux, Fleurs en Relief, 130
Coq et Plumes, 111
Coquilles, 28, 30
- D**
Danaïdes, 14, 15
Dauphins, 31
Davos, 126
Deux Sirènes, 84
Domremy, 76
- E**
Eglantines, 62
Eléphants, 37
Escargot, 2
- F**
Faucon, 25
Fontainebleu, 118
Fougères, 60
- G**
Géo, 108
Graines, 115
Grand Cyprins, 83
Grenouille, 23
Grignon, 3
Gros Scarabees, 129
Gui, 125
Guirlandes, 92
- H**
Hélène, 55
- J**
Jaffa, 99
- L**
Languedoc, 71
Laurier, 9
Le Jade, 48
Le Mans, 127
Le Rouge Corail, 54
- M**
Martigues, 34, 66
Milan, 20
Misti, 49
Moineaux, 6
Monnaie du Pape, 19
Montmorency, 87
Muguet, 85
Myosotis, 41
- N**
Narkiss, 44
- O**
Oiseaux Aux Epis Gravés, 113
Ondines, 32
Oreilles Gravées, 102
Ormeaux, 8, 128
Ornis, 11
Oursins, 93
- P**
Pâquerettes, 72, 106
Perche, 22, 29
Perruches, 5, 86
Phalènes, 36
Picardie, 120
Pierrefonds, 104
Pinsons, 1, 116
Pivoines, 13
Poseidon, 109
Prunes, 88
- Q**
Quatre Panneaux, 96
- R**
Rameaux, 105
Rampillon, 89
Rhodes, 103
Roger, 45, 46
Ronce, 121
Roscoff, 33
- S**
Saint Hubert, 112
Saint-Christophe, 24
Saint-Denis, 80
Sanglier, 21
Sauge, 4, 17
Sauterelles, 16, 98, 119
Senlis, 78
Sirène, 64, 67
Sirènes, 52
Six Têtes, 101
Soleil, 61, 63
Sophora, 18, 77
Soucis, 117
Soustons, 73
Spirales, 91, 95
Suzanne, 58
- T**
Thais, 56
Thibet, 70, 74
Tortues, 38
Trois Papillons, 39
Trois Sirènes, 40
- V**
Vibrations, 107
Vitesse, 26
Voilé Mains Jointes, 57
- Y**
Yeso, 59

CONDITIONS OF SALE • BUYING AT CHRISTIE'S

CONDITIONS OF SALE

These Conditions of Sale and the Important Notices and Explanation of Cataloguing Practice set out the terms on which we offer the **lots** listed in this catalogue for sale. By registering to bid and/or by bidding at auction you agree to these terms, so you should read them carefully before doing so. You will find a glossary at the end explaining the meaning of the words and expressions coloured in bold.

Unless we own a **lot** (A symbol, Christie's acts as agent for the seller).

A BEFORE THE SALE

1 DESCRIPTION OF LOTS

(a) Certain words used in the catalogue description have special meanings. You can find details of these on the page headed 'Important Notices and Explanation of Cataloguing Practice' which forms part of these terms. You can find a key to the Symbols found next to certain catalogue entries under the section of the catalogue called 'Symbols Used in this Catalogue for Sale'.
(b) Our description of any **lot** in the catalogue, any **condition report** and any other statement made by us (whether orally or in writing) about any **lot**, including about its nature or condition, artist, period, materials, approximate dimensions or **provenance** are our opinion and should not be relied upon as a statement of fact. We do not carry out in-depth research of the sort carried out by professional historians and scholars. All dimensions and weights are approximate only.

2 OUR RESPONSIBILITY FOR OUR DESCRIPTION OF LOTS

We do not provide any guarantee in relation to the nature of a **lot** apart from our **authenticity warranty** contained in paragraph E2 and to the extent provided in paragraph I below.

3 CONDITION

(a) The **condition of lots** sold in our auctions can vary widely due to factors such as age, previous damage, restoration, repair and wear and tear. Their nature means that they will rarely be in perfect **condition**. **Lots** are sold 'as is', in the **condition** they are in at the time of the sale, without any representation or warranty or assumption of liability of any kind as to condition by Christie's or by the seller.
(b) Any reference to **condition** in a catalogue entry or in a **condition report** will not amount to a full description of **condition**, and images may not show a **lot** clearly. Colours and shades may look different in print or on screen to how they look on physical inspection. **Condition reports** may be available to help you evaluate the **condition** of a **lot**. **Condition reports** are provided free of charge as a convenience to our buyers and are for guidance only. They offer our opinion but they may not refer to all faults, inherent defects, restoration, alteration or adaptation because our staff are not professional restorers or conservators. For that reason they are not an alternative to examining a **lot** in person or taking your own professional advice. It is your responsibility to ensure that you have requested, received and considered any **condition report**.

4 VIEWING LOTS PRE-AUCTION

(a) If you are planning to bid on a **lot**, you should inspect it personally or through a knowledgeable representative before you make a bid to make sure that you accept the description and its **condition**. We recommend you get your own advice from a restorer or other professional adviser.
(b) Pre-auction viewings are open to the public free of charge. Our specialists may be available to answer questions at pre-auction viewings or by appointment.
5 ESTIMATES
Estimates are based on the **condition**, rarity, quality and **provenance** of the **lots** and on prices recently paid at auction for similar property. **Estimates** can change. Neither you, nor anyone else, may rely on any **estimates** as a prediction or guarantee of the actual selling price of a **lot** or its value for any other purpose. **Estimates** do not include the **buyer's premium** or any applicable taxes.
6 WITHDRAWAL
Christie's may, at its option, withdraw any **lot** at any time prior to or during the sale of a **lot**. Christie's has no liability to you for any decision to withdraw.
7 JEWELLERY
(a) Coloured gemstones (such as rubies, sapphires and emeralds) may have been treated to improve their look, through methods such as heating and oiling. These methods are accepted by the international jewellery trade but may make the gemstone less strong and/or require special care over time.
(b) All types of gemstones may have been improved by some method. You may request a gemmological report for any item which does not have a request for the report is made to us at least three weeks before the date of the auction and you pay the fee for the report.
(c) We do not obtain a gemmological report for every gemstone sold in our auctions. Where we do get gemmological reports from internationally recognised gemmological laboratories, such reports will be described in the catalogue. Reports from American gemmological laboratories will describe any improvement or treatment to the gemstone. Reports from European gemmological laboratories will describe any improvement or treatment only if we request that they do so, and will confirm when no improvement or treatment has been made. Because of differences in approach and technology, laboratories may not agree whether a particular gemstone has been treated, the amount of treatment or whether treatment is permanent. The gemmological laboratories will only report on the improvements or treatments known to the laboratories at the date of the report.

(d) For jewellery sales, **estimates** are based on the information in any gemmological report or, if no report is available, assume that the gemstones may have been treated or enhanced.
B WATCHES & CLOCKS

(a) Almost all clocks and watches are repaired in their lifetime and may include parts which are not original. We do not give a **warranty** that any individual component part of any watch or clock is **authentic**. Watchbands described as 'associated' are not part of the original watch and may not be **authentic**. Clocks may be sold without pendulums, weights or keys.
(b) As collectors' watches and clocks often have very fine and complex mechanisms, a general service, change of battery or further repair work may be necessary, for which you are responsible. We do not give a **warranty** that any watch or clock is in good working order. Certificates are not available unless described in the catalogue.
(c) Most watches have been opened to find out the type and quality of movement. For that reason, watches with water resistant cases may not be waterproof and we recommend you have them checked by a competent watchmaker before use.
Important information about the sale, transport and shipping of watches and watchbands can be found in paragraph H2(g).

B REGISTERING TO BID

1 NEW BIDDERS

(a) If this is your first time bidding at Christie's or you are a returning bidder who has not bought anything from any of our salerooms within the last two years you must register at least 48 hours before an auction to give us enough time to process and approve your registration. We may, at our option, decline to permit you to register as a bidder. You will be asked for the following:
(i) for individuals: Photo identification (driving licence, national identity card or passport) and, if not shown on the ID document, proof of your current address (for example, a current utility bill or bank statement);
(ii) for corporate clients: Your Certificate of Incorporation or equivalent document(s) showing your name and registered address together with documentary proof of directors and beneficial owners; and
(iii) for trusts, partnerships, offshore companies and other business structures, please contact us in advance to discuss our requirements.
(b) We may also ask you to give us a financial reference and/or a deposit as a condition of allowing you to bid. For help, please contact our Credit Department on +44 (0)20 7839 9060.

2 RETURNING BIDDERS

We may at our option ask you for current identification as described in paragraph B1(a) above, a financial reference or a deposit as a condition of allowing you to bid. If you have not bought anything from any of our salerooms in the last two years or if you want to spend more than on previous occasions, please contact our Credit Department on +44 (0)20 7839 9060.

3 IF YOU FAIL TO PROVIDE THE RIGHT DOCUMENTS

If in our opinion you do not satisfy our bidder identification and registration procedures including, but not limited to completing any anti-money laundering and/or anti-terrorism financing checks we may require to our satisfaction, we may refuse to register you to bid, and if you make a successful bid, we may cancel the contract for sale between you and the seller.
4 BIDDING ON BEHALF OF ANOTHER PERSON

(a) **As authorised bidder.** If you are bidding on behalf of another person, that person will need to complete the registration requirements above before you can bid, and supply a signed letter authorising you to bid for him/her.
(b) **As agent for an undisclosed principal.** If you are bidding as an agent for an undisclosed principal (the ultimate buyer/s), you accept personal liability to pay the **purchase price** and all other sums due. Further, you warrant that:
(i) you have conducted appropriate customer due diligence on the ultimate buyer(s) of the lot(s) in accordance with any and all applicable anti-money laundering and sanctions laws; consent to us relying on this due diligence, and you will retain for a period of not less than five years the documentation and records evidencing the due diligence;
(ii) you will make such documentation and records evidencing our due diligence promptly available to and records maintained by an independent third-party auditor upon our written request to do so. We will not disclose such documentation and records to any third-parties unless (1) it is already in the public domain, (2) it is required to be disclosed by law, or (3) it is in accordance with anti-money laundering laws;
(iii) the arrangements between you and the ultimate buyer(s) are not designed to facilitate tax crimes;
(iv) you do not know, and have no reason to suspect, that the funds used for settlement are connected with, the proceeds of any criminal activity or that the ultimate buyer(s) are under investigation, charged with or convicted of money laundering, terrorist activities or other money laundering predicate crimes.
A bidder accepts personal liability to pay the **purchase price** and all other sums due unless it has been agreed in writing with Christie's before commencement of the auction that the bidder is acting as an agent on behalf of a named third party acceptable to Christie's and that Christie's will only seek payment from the named third party.

5 BIDDING IN PERSON

If you wish to bid in the saleroom you must register for a numbered bidding paddle at least 30 minutes before the auction. You may register online at www.christies.com in person, for help, please contact the Credit Department on +44 (0)20 7839 9060.
6 BIDDING SERVICES
The bidding services described below are a free service offered as a convenience to our clients and Christie's is not responsible for any error (human or otherwise), omission or breakdown in providing these services.
(a) Phone Bids
Your request for this service must be made no later than 24 hours prior to the auction. We will accept bids by telephone for lots only if our staff are available to take the bids. If you need to bid in a language other than in English, you must arrange this well before the auction. We may record telephone bids. By bidding on the telephone, you are agreeing to us recording your conversations. You also agree that your telephone bids are governed by these Conditions of Sale.
(b) Internet Bids on Christie's Live™
For certain auctions we will accept bids over the Internet. Please visit www.christies.com/livebidding and click on the 'Bid Live' icon to see details of how to watch, hear and bid at the auction from your computer. As well as these Conditions of Sale, internet bids are governed by the Christie's LIVE™ terms of use which are available on www.christies.com.
(c) Written Bids
You may find a Written Bid Form at the back of our catalogues, at any Christie's office or by choosing the sale and viewing the **lots** online at www.christies.com. We must receive your completed Written Bid Form at least 24 hours before the auction. Bids must be placed in the currency of the saleroom. The auctioneer will take reasonable steps to carry out written bids at the lowest possible price, taking into account the **reserve**. If you make a written bid on a **lot** which does not have a **reserve** and there is no higher bid than yours, we will bid on your behalf at around 50% of the **low estimate** or, if lower, the amount of your bid. If we receive written bids on a **lot** for identical amounts, and at the auction these are the highest bids on the **lot**, we will sell the **lot** to the bidder whose written bid we received first.
C AT THE SALE
1 WHO CAN ENTER THE AUCTION
We may, at our option, refuse admission to our premises or decline to permit participation in any auction or to reject any bid.
2 RESERVE
Unless otherwise indicated, all **lots** are subject to a **reserve**. We identify **lots** that are offered without **reserve** with the symbol • next to the **lot** number. The **reserve** cannot be more than the **lot's low estimate**.
3 AUCTIONEER'S DISCRETION
The auctioneer can at his sole option:
(a) refuse any bid;
(b) make the bidding backwards or forwards in any way he or she may decide, or change the order of the **lots**;
(c) withdraw any **lot**;
(d) identify any **lot** or combine any two or more **lots**;
(e) reopen or continue the bidding even after the hammer has fallen; and
(f) in the case of error or dispute and whether during or after the auction, to continue the bidding, determine the successful bidder, cancel the sale of the **lot**, or reoffer and resell any **lot**. If any dispute relating to bidding arises during or after the auction, the auctioneer's decision in exercise of this option is final.
4 BIDDING
The auctioneer accepts bids from:
(a) bidders in the saleroom;
(b) telephone bidders, and internet bidders through 'Christie's LIVE™' (as shown above in Section B6); and
(c) written bids (also known as absentee bids or commission bids) left with us by a bidder before the auction.
5 BIDDING ON BEHALF OF THE SELLER
The auctioneer may, at his or her sole option, bid on behalf of the seller up to but not including the amount of the **reserve** either by making consecutive bids or by making bids in response to other bidders. The auctioneer will not identify these bids made on behalf of the seller and will not make any bid on behalf of the seller at or above the **reserve**. If **lots** are offered without **reserve**, the auctioneer will generally decide to open the bidding at 50% of the **low estimate** for the **lot**. If no bid is made at that level, the auctioneer may decide to go backwards at his or her sole option until a bid is made, and then continue up from that amount. In the event that there are no bids on a **lot**, the auctioneer may deem such **lot** unsold.
6 BID INCREMENTS
Bidding generally starts below the **low estimate** and increases in steps (bid increments). The auctioneer will decide at his or her sole option where the bidding should start and the bid increments. The usual bid increments are shown for guidance only on the Written Bid Form at the back of this catalogue.
7 CURRENCY CONVERTER
The saleroom video screens (and Christie's LIVE™) may show bids in some other major currencies as well as sterling. Any conversion is for guidance only and we cannot be bound by any rate of exchange used. Christie's is not responsible for any error (human or otherwise), omission or breakdown in providing these services.

VAT SYMBOLS AND EXPLANATION

You can find a glossary explaining the meanings of words coloured in bold on this page at the end of the section of the catalogue headed 'Conditions of Sale'

VAT payable

Symbol	
No Symbol	We will use the VAT Margin Scheme. No VAT will be charged on the hammer price . VAT at 20% will be added to the buyer's premium but will not be shown separately on our invoice.
†	We will invoice under standard VAT rules and VAT will be charged at 20% on both the hammer price and buyer's premium and shown separately on our invoice.
θ	For qualifying books only, no VAT is payable on the hammer price or the buyer's premium .
*	These lots have been imported from outside the EU for sale and placed under the Temporary Admission regime. Import VAT is payable at 5% on the hammer price . VAT at 20% will be added to the buyer's premium but will not be shown separately on our invoice.
Ω	These lots have been imported from outside the EU for sale and placed under the Temporary Admission regime. Customs Duty as applicable will be added to the hammer price and Import VAT at 20% will be charged on the Duty Inclusive hammer price . VAT at 20% will be added to the buyer's premium but will not be shown separately on our invoice.
α	The VAT treatment will depend on whether you have registered to bid with an EU or non-EU address: <ul style="list-style-type: none"> • If you register to bid with an address within the EU you will be invoiced under the VAT Margin Scheme (see No Symbol above). • If you register to bid with an address outside of the EU you will be invoiced under standard VAT rules (see † symbol above)
‡	For wine offered 'in bond' only. If you choose to buy the wine in bond no Excise Duty or Clearance VAT will be charged on the hammer . If you choose to buy the wine out of bond Excise Duty as applicable will be added to the hammer price and Clearance VAT at 20% will be charged on the Duty inclusive hammer price . Whether you buy the wine in bond or out of bond, 20% VAT will be added to the buyer's premium and shown on the invoice.

VAT refunds: what can I reclaim?

If you are:

A non VAT registered UK or EU buyer		No VAT refund is possible
UK VAT registered buyer	No symbol and α	The VAT amount in the buyer's premium cannot be refunded. However, on request we can re-invoice you outside of the VAT Margin Scheme under normal UK VAT rules (as if the lot had been sold with a † symbol). Subject to HMRC's rules, you can then reclaim the VAT charged through your own VAT return.
	* and Ω	Subject to HMRC's rules, you can reclaim the Import VAT charged on the hammer price through your own VAT return when you are in receipt of a C79 form issued by HMRC. The VAT amount in the buyer's premium is invoiced under Margin Scheme rules so cannot normally be claimed back. However, if you request to be re-invoiced outside of the Margin Scheme under standard VAT rules (as if the lot had been sold with a † symbol) then, subject to HMRC's rules, you can reclaim the VAT charged through your own VAT return.
EU VAT registered buyer	No Symbol and α	The VAT amount in the buyer's premium cannot be refunded. However, on request we can re-invoice you outside of the VAT Margin Scheme under normal UK VAT rules (as if the lot had been sold with a † symbol). See below for the rules that would then apply.
	†	If you provide us with your EU VAT number we will not charge VAT on the buyer's premium . We will also refund the VAT on the hammer price if you ship the lot from the UK and provide us with proof of shipping, within three months of collection.
	* and Ω	The VAT amount on the hammer and in the buyer's premium cannot be refunded. However, on request we can re-invoice you outside of the VAT Margin Scheme under normal UK VAT rules (as if the lot had been sold with a † symbol). See above for the rules that would then apply.
Non EU buyer		If you meet ALL of the conditions in notes 1 to 3 below we will refund the following tax charges:
	No Symbol	We will refund the VAT amount in the buyer's premium .
	† and α	We will refund the VAT charged on the hammer price . VAT on the buyer's premium can only be refunded if you are an overseas business. The VAT amount in the buyer's premium cannot be refunded to non-trade clients.
	‡ (wine only)	No Excise Duty or Clearance VAT will be charged on the hammer price providing you export the wine while 'in bond' directly outside the EU using an Excise authorised shipper. VAT on the buyer's premium can only be refunded if you are an overseas business. The VAT amount in the buyer's premium cannot be refunded to non-trade clients.
	* and Ω	We will refund the Import VAT charged on the hammer price and the VAT amount in the buyer's premium .

1. We **CANNOT** offer refunds of VAT amounts or Import VAT to buyers who do not meet all applicable conditions in full. If you are unsure whether you will be entitled to a refund, please contact Client Services at the address below **before you bid**.

2. No VAT amounts or Import VAT will be refunded where the total refund is under £100.

3. In order to receive a refund of VAT amounts/Import VAT (as applicable) non-EU buyers must:

(a) have registered to bid with an address outside of the EU; **and**

(b) provide immediate proof of correct export out of the EU within the required time frames of: 30 days via a controlled export for † and Ω **lots**. All other **lots** must be exported within three months of collection.

4. Details of the documents which you must provide to us to show satisfactory proof of export/shipping are available from our VAT team at the address below. We charge a processing fee of £35.00 per invoice to check shipping/export documents. We will waive this processing fee if you appoint Christie's Shipping Department to arrange your export/shipping.

5. If you appoint Christie's Art Transport or one of our authorised shippers to arrange your export/shipping we will issue you with an export invoice with the applicable VAT or duties cancelled as outlined above. If you later cancel or change the shipment in a manner that infringes the rules outlined above we will issue a revised invoice charging you all applicable taxes/charges.

6. If you ask us to re-invoice you under normal UK VAT rules (as if the **lot** had been sold with a † symbol) instead of under the Margin Scheme the **lot** may become ineligible to be resold using the Margin Schemes. **Movement within the EU must be within 3 months from the date of sale.** You should take professional advice if you are unsure how this may affect you.

7. All invoicing requests must be received within four years from the date of sale. If you have any questions about VAT refunds please contact Christie's Client Services on info@christies.com
Tel: +44 (0)20 7389 2886.
Fax: +44 (0)20 7839 1611.

SYMBOLS USED IN THIS CATALOGUE

The meaning of words coloured in **bold** in this section can be found at the end of the section of the catalogue headed 'Conditions of Sale'.

○ Christie's has a direct financial interest in the lot. See Important Notices and Explanation of Cataloguing Practice.

△ Owned by Christie's or another **Christie's Group** company in whole or part. See Important Notices and Explanation of Cataloguing Practice.

◆ Christie's has a direct financial interest in the **lot** and has funded all or part of our interest with the help of someone else. See Important Notices and Explanation of Cataloguing Practice.

λ Artist's Resale Right. See Section D3 of the Conditions of Sale.

• **Lot** offered without **reserve** which will be sold to the highest bidder regardless of the pre-sale estimate in the catalogue.

~ **Lot** incorporates material from endangered species which could result in export restrictions. See Section H2(b) of the Conditions of Sale.

ψ **Lot** incorporates material from endangered species which is shown for display purposes only and is not for sale. See Section H2(g) of the Conditions of Sale.

?, *, Ω, α, #, † See VAT Symbols and Explanation.

■ See Storage and Collection Pages.

Please note that **lots** are marked as a convenience to you and we shall not be liable for any errors in, or failure to, mark a **lot**.

IMPORTANT NOTICES AND EXPLANATION OF CATALOGUING PRACTICE

CHRISTIE'S INTEREST IN PROPERTY CONSIGNED FOR AUCTION

△ **Property Owned in part or in full by Christie's**
From time to time, Christie's may offer a **lot** which it owns in whole or in part. Such property is identified in the catalogue with the symbol △ next to its **lot** number.

○ **Minimum Price Guarantees**
On occasion, Christie's has a direct financial interest in the outcome of the sale of certain lots consigned for sale. This will usually be where it has guaranteed to the Seller that whatever the outcome of the auction, the Seller will receive a minimum sale price for the work. This is known as a minimum price guarantee. Where Christie's holds such a financial interest we identify such **lots** with the symbol ○ next to the **lot** number.

◆ **Third Party Guarantees/Irrevocable bids**
Where Christie's has provided a Minimum Price Guarantee it is at risk of making a loss, which can be significant, if the **lot** fails to sell. Christie's therefore sometimes chooses to share that risk with a third party. In such cases the third party agrees prior to the auction to place an irrevocable written bid on the **lot**. The third party is therefore committed to bidding on the **lot** and, even if there are no other bids, buying the **lot** at the level of the written bid unless there are any higher bids. In doing so, the third party takes on all or part of the risk of the **lot** not being sold. If the **lot** is not sold, the third party may incur a loss. **Lots** which are subject to a third party guarantee arrangement are identified in the catalogue with the symbol ◆.

In most cases, Christie's compensates the third party in exchange for accepting this risk. Where the third party is the successful bidder, the third party's remuneration is based on a fixed financing fee. If the third party is not the successful bidder, the remuneration may either be based on a fixed fee or an amount calculated against the final **hammer price**. The third party may also bid for the **lot** above the written bid. Where the third party is the successful bidder, Christie's will report the final **purchase price** net of the fixed financing fee.

Third party guarantors are required by us to disclose to anyone they are advising their financial interest in any **lots** they are guaranteeing. However, for the avoidance of any doubt, if you are advised by or bidding through an agent on a **lot** identified as being subject to a third party guarantee you should always ask your agent to confirm whether or not he or she has a financial interest in relation to the **lot**.

Other Arrangements

Christie's may enter into other arrangements not involving bids. These include arrangements where Christie's has given the Seller an Advance on the proceeds of sale of the **lot** or where Christie's has shared the risk of a guarantee with a partner without the partner being required to place an irrevocable written bid or otherwise participating in the bidding on the **lot**. Because such arrangements are unrelated to the bidding process they are not marked with a symbol in the catalogue.

Bidding by parties with an interest

In any case where a party has a financial interest in a **lot** and intends to bid on it we will make a saleroom announcement to ensure that all bidders are aware of this. Such financial interests can include where beneficiaries of an Estate have reserved the right to bid on a **lot** consigned by the Estate or where a partner in a risk-sharing arrangement has reserved the right to bid on a **lot** and/or notified us of their intention to bid.

Please see <http://www.christies.com/financial-interest/> for a more detailed explanation of minimum price guarantees and third party financing arrangements.

Where Christie's has an ownership or financial interest in every **lot** in the catalogue, Christie's will not designate each **lot** with a symbol, but will state its interest in the front of the catalogue.

POST 1950 FURNITURE

All items of post-1950 furniture included in this sale are items either not originally supplied for use in a private home or now offered solely as works of art. These items may not comply with the provisions of the Furniture and Furnishings (Fire) (Safety) Regulations 1988 (as amended in 1989 and 1993, the 'Regulations'). Accordingly, these items should not be used as furniture in your home in their current condition. If you do intend to use such items for this purpose, you must first ensure that they are reupholstered, restuffed and/or recovered (as appropriate) in order that they comply with the provisions of the Regulations.

EXPLANATION OF CATALOGUING PRACTICE

Terms referred to in paragraph 2 are as follows:-
A work catalogued with the name(s) or recognised designation of an artist, without any qualification, is, in our opinion, a work by the artist.
In other cases, the following expressions, with the following meanings are used:
"Attributed to ..."
in our opinion probably a work by the artist in whole or in part.
"Studio of ..."
"Workshop of ..."
in our opinion a work executed in the studio or workshop of the artist, possibly under his supervision.
"Circle of ..."
in our opinion a work of the period of the artist and showing his influence.
"Follower of ..."
in our opinion a work executed in the artist's style but not necessarily by a pupil.
"Manner of ..."
in our opinion a work executed in the artist's style but of a later date.
"After ..."
in our opinion a copy (of any date) of a work of the artist.
"Signed ..."
"Dated ..."
"Inscribed ..."
in our opinion the work has been signed/dated/inscribed by the artist. The addition of a question mark indicates an element of doubt.
"With signature ..."
"With date ..."
"With inscription ..."
in our opinion the signature/date/inscription/stamp is by a hand other than that of the artist.

REFERENCE NUMBERS

Where applicable, the numbers which accompany the title of each lot refer to the catalogue raisonné compiled by Felix Marcihac 'R. Laliq. oeuvre de Verre' (Paris 1994).

STORAGE AND COLLECTION

COLLECTION LOCATION AND TERMS

Specified **lots** (sold and unsold) marked with a filled square (■) not collected from Christie's by 5.00pm on the day of the sale will, at our option, be removed to Christie's Park Royal. Christie's will inform you if the **lot** has been sent offsite. Our removal and storage of the **lot** is subject to the terms and conditions of storage which can be found at [Christies.com/storage](https://www.christies.com/storage) and our fees for storage are set out in the table below - these will apply whether the **lot** remains with Christie's or is removed elsewhere.

If the **lot** is transferred to Christie's Park Royal, it will be available for collection from 12 noon on the second business day following the sale.

Please call Christie's Client Service 24 hours in advance to book a collection time at Christie's Park Royal. All collections from Christie's Park Royal will be by pre-booked appointment only.

Tel: +44 (0)20 7839 9060

Email: cscollectionsuk@christies.com.

If the **lot** remains at Christie's it will be available for collection on any working day 9.00am to 5.00pm. **Lots** are not available for collection at weekends.

PAYMENT OF ANY CHARGES DUE

ALL lots whether sold or unsold will be subject to storage and administration fees. Please see the details in the table below. Storage Charges may be paid in advance or at the time of collection.

Lots may only be released on production of the 'Collection Form' from Christie's. **Lots** will not be released until all outstanding charges are settled.

SHIPPING AND DELIVERY

Christie's Post-Sale Service can organise local deliveries or international freight. Please contact them on +44 (0)20 7752 3200 or PostSaleUK@christies.com. To ensure that arrangements for the transport of your lot can be finalised before the expiry of any free storage period, please contact Christie's Post-Sale Service for a quote as soon as possible after the sale.

PHYSICAL LOSS & DAMAGE LIABILITY

Christie's will accept liability for physical loss and damage to sold **lots** whilst in storage. Christie's liability will be limited to the invoice purchase price including buyers' premium. Christie's liability will continue until the **lots** are collected by you or an agent acting for you following payment in full. Christie's liability is subject to Christie's Terms and Conditions of Liability posted on www.christies.com.

ADMINISTRATION FEE, STORAGE & RELATED CHARGES		
CHARGES PER LOT	LARGE OBJECTS E.g. Furniture, Large Paintings & Sculpture	SMALL OBJECTS E.g. Books, Luxury, Ceramics, Small Paintings
1-30 days after the auction	Free of Charge	Free of Charge
31st day onwards: Administration Fee Storage per day	£70.00 £8.00	£35.00 £4.00
Loss & Damage Liability	Will be charged on purchased lots at 0.5% of the hammer price or capped at the total storage charge, whichever is the lower amount.	
All charges are subject to VAT. Please note that there will be no charge to clients who collect their lots within 30 days of this sale. Size to be determined at Christie's discretion.		

CHRISTIE'S PARK ROYAL

Unit 7, Central Park
Acton Lane
London NW10 7FY

Vehicle access via Central Park only.

COLLECTION FROM CHRISTIE'S PARK ROYAL

Please note that the opening hours for Christie's Park Royal are Monday to Friday 9.00am to 5.00pm and lots transferred are not available for collection at weekends.





UN/BREAKABLE

London, 3 October 2018

VIEWING

29 September - 3 October 2018
8 King Street
London SW1Y 6QT

CONTACT

Joy McCall
jmccall@christies.com
+44 (0)20 7752 3237

EDMUND DE WAAL (B. 1964)

Colourfield

A set of ten pots, 2004

£12,000-18,000

Other fees apply in addition to the hammer price.
See Section D of our Conditions of Sale at the
back of the Auction Catalogue

CHRISTIE'S



ALEXANDER ARCHIPENKO 1887-1964
People, screen, unique piece, 1950
Lucite, aluminium and neon lights
H 188 x L 220 x P 46 cm / 74 x 86 $\frac{5}{8}$ x 18 $\frac{1}{8}$ in
€200 000 - 300 000

DESIGN EVENING SALE

Paris, 22 May 2018

VIEWING

17 - 22 May 2018
9, Avenue Matignon
75008 Paris

CONTACT

Pauline De Smedt
pdsmedt@christies.com
+33 (0)1 40 76 83 54

Other fees apply in addition to the hammer price. See Section D of our Conditions of Sale at the back of the Auction Catalogue

CHRISTIE'S

LALIQUE

TUESDAY 15 MAY 2018 AT 1.00 PM

8 King Street, St. James's, London SW1Y 6QT

CODE NAME: YESO

SALE NUMBER: 16016

(Dealers billing name and address must agree with tax exemption certificate. Once issued, we cannot change the buyer's name on an invoice or re-issue the invoice in a different name.)

BID ONLINE FOR THIS SALE AT CHRISTIES.COM

BIDDING INCREMENTS

Bidding generally starts below the **low estimate** and increases in steps (bid increments) of up to 10 per cent. The auctioneer will decide where the bidding should start and the bid increments. Written bids that do not conform to the increments set below may be lowered to the next bidding interval.

UKE100 to UKE2,000	by UKE100s
UKE2,000 to UKE3,000	by UKE200s
UKE3,000 to UKE5,000	by UKE200, 500, 800 (eg UKE4,200, 4,500, 4,800)
UKE5,000 to UKE10,000	by UKE500s
UKE10,000 to UKE20,000	by UKE1,000s
UKE20,000 to UKE30,000	by UKE2,000s
UKE30,000 to UKE50,000	by UKE2,000, 5,000, 8,000 (eg UKE32,000, 35,000, 38,000)
UKE50,000 to UKE100,000	by UKE5,000s
UKE100,000 to UKE120,000	by UKE10,000s
Above UKE200,000	at auctioneer's discretion

The auctioneer may vary the increments during the course of the auction at his or her own discretion.

- I request Christie's to bid on the stated **lots** up to the maximum bid I have indicated for each **lot**.
- I understand that if my bid is successful, the amount payable will be the sum of the **hammer price** and the **buyer's premium** (together with any taxes chargeable on the **hammer price** and **buyer's premium** and any applicable Artist's Resale Royalty in accordance with the Conditions of Sale - Buyer's Agreement). The **buyer's premium** rate shall be an amount equal to 25% of the **hammer price** of each **lot** up to and including £175,000, 20% on any amount over £175,000 up to and including £3,000,000 and 12.5% of the amount above £3,000,000. For wine and cigars there is a flat rate of 20% of the **hammer price** of each **lot** sold.
- I agree to be bound by the Conditions of Sale printed in the catalogue.
- I understand that if Christie's receive written bids on a **lot** for identical amounts and the auction these are the highest bids on the **lot**, Christie's will sell the **lot** to the bidder whose written bid it received and accepted first.
- Written bids submitted on 'no reserve' **lots** will, in the absence of a higher bid, be executed at approximately 50% of the **low estimate** or at the amount of the bid if it is less than 50% of the **low estimate**. I understand that Christie's written bid service is a free service provided for clients and that, while Christie's will be as careful as it reasonably can be, Christie's will not be liable for any problems with this service or loss or damage arising from circumstances beyond Christie's reasonable control.

Auction Results: +44 (0)20 7839 9060

WRITTEN BIDS FORM · CHRISTIE'S LONDON

WRITTEN BIDS MUST BE RECEIVED AT LEAST 24 HOURS BEFORE THE AUCTION BEGINS.

CHRISTIE'S WILL CONFIRM ALL BIDS RECEIVED BY FAX BY RETURN FAX. IF YOU HAVE NOT RECEIVED CONFIRMATION WITHIN ONE BUSINESS DAY, PLEASE CONTACT THE BID DEPARTMENT: TEL: +44 (0)20 7389 2658 · FAX: +44 (0)20 7930 8870 · ON-LINE WWW.CHRISTIES.COM

16016

Client Number (if applicable) Sale Number

Billing Name (please print)

Address

Postcode

Daytime Telephone Evening Telephone

Fax (Important) E-mail

Please tick if you prefer not to receive information about our upcoming sales by e-mail
I have read and understood this written bid form and the Conditions of Sale - Buyer's Agreement

Signature

If you have not previously bid or consigned with Christie's, please attach copies of the following documents. Individuals: government-issued photo identification (such as a driving licence, national identity card, or passport) and, if not shown on the ID document, proof of current address, for example a utility bill or bank statement. Corporate clients: a certificate of incorporation. Other business structures such as trusts, offshore companies or partnerships: please contact the Compliance Department at +44 (0)20 7839 9060 for advice on the information you should supply. If you are registering to bid on behalf of someone who has not previously bid or consigned with Christie's, please attach identification documents for yourself as well as the party on whose behalf you are bidding, together with a signed letter of authorisation from that party. New clients, clients who have not made a purchase from any Christie's office within the last two years, and those wishing to spend more than on previous occasions will be asked to supply a bank reference. We also request that you complete the section below with your bank details:

Name of Bank(s)

Address of Bank(s)

Account Number(s)

Name of Account Officer(s)

Bank Telephone Number

PLEASE PRINT CLEARLY

Lot number (in numerical order)	Maximum Bid £ (excluding buyer's premium)	Lot number (in numerical order)	Maximum Bid £ (excluding buyer's premium)

If you are registered within the European Community for VAT/IVA/TVA/BTW/MWST/MOMS Please quote number below:

ART. WORK.

Kick-start your career in the art world
with a Christie's Education.

[LEARN MORE AT CHRISTIES.EDU](https://www.christies.edu)

CHRISTIE'S
EDUCATION

LONDON | NEW YORK | HONG KONG
DEGREE PROGRAMMES | CONTINUING EDUCATION | ONLINE COURSES

CHRISTIE'S

CHRISTIE'S INTERNATIONAL PLC

François Pinault, Chairman
Guillaume Cerutti, Chief Executive Officer
Stephen Brooks, Deputy Chief Executive Officer
Jussi Pylkkänen, Global President
François Curiel, Chairman, Europe & Asia
Loïc Brivezac
Gilles Erulin
Jean-François Palus
Héloïse Temple-Boyer
Sophie Carter, Company Secretary

INTERNATIONAL CHAIRMEN

Stephen Lash, Chairman Emeritus, Americas
The Earl of Snowdon, Honorary Chairman, EMERI
Charles Cator, Deputy Chairman, Christie's Int.
Xin Li, Deputy Chairwoman, Christie's Int.

CHRISTIE'S EUROPE, MIDDLE EAST, RUSSIA AND INDIA (EMERI)

François Curiel, Chairman
Prof. Dr. Dirk Boll, President
Bertold Mueller, Managing Director,
Continental Europe, Middle East, Russia & India

SENIOR DIRECTORS, EMERI

Zoe Ainscough, Simon Andrews, Mariolina Bassetti,
Ellen Berkeley, Jill Berry, Giovanna Bertazzoni,
Edouard Boccon-Gibod, Peter Brown, Olivier Camu,
Karen Carroll, Sophie Carter, Karen Cole, Paul Cutts,
Isabelle de La Bruyere, Roland de Lathuy,
Eveline de Proyart, Leila de Vos, Harriet Drummond,
Adele Falconer, David Findlay, Margaret Ford,
Edmond Francey, Daniel Gallen, Roni Gilat-Baharaff,
Philip Harley, James Hastie, Karl Hermanns,
Rachel Hilderley, Jetske Homan Van Der Heide
Michael Jeha, Donald Johnston,
Erem Kassim-Lakha, Nicholas Lambourn,
William Lorimer, Catherine Manson,
Jeremy Morrison, Nicholas Orchard, Francis Outred,
Henry Pettifer, Will Porter, Paul Raison,
Christiane Rantzau, Tara Rastrick, Amjad Rauf,
François de Ricqles, William Robinson,
Matthew Rubinger, Marc Sands, Tim Schmelcher,
John Stainton, Nicola Steel, Aline Sylla-Walbaum,
Sheridan Thompson, Alexis de Tiesenhausen,
Jay Vinca, Andrew Ward, David Warren,
Andrew Waters, Harry Williams-Bulkeley,
Tom Woolston, André Zlattinger

CHRISTIE'S ADVISORY BOARD, EUROPE

Pedro Girao, Chairman,
Arpad Busson, Kemal Has Cingillioglu,
Hélène David-Weill, Genevra Elkann,
I. D. Fürstin zu Fürstenberg,
Laurence Graff, H.R.H. Prince Pavlos of Greece,
Marquesa de Bellavista Mrs Alicia Kopolowitz,
Robert Manoukian, Rosita, Duchess of Marlborough,
Countess Daniela Memmo d'Amelio,
Usha Mittal, Polissena Perrone, Çiğdem Simavi

CHRISTIE'S UK

CHAIRMAN'S OFFICE, UK

Orlando Rock, Chairman
Noël Annesley, Honorary Chairman;
Richard Roundell, Vice Chairman;
Robert Copley, Deputy Chairman;
The Earl of Halifax, Deputy Chairman;
Francis Russell, Deputy Chairman;
Julia Delves Broughton, James Hervey-Bathurst,
Nicholas White, Mark Wrey

DIRECTORS, UK

Cristian Albu, Marco Almeida, Maddie Amos,
Katharine Arnold, Guy Agazarian, Alexandra Baker,
Sven Becker, Jane Blood, Piers Boothman,
David Bowes-Lyon, Louise Broadhurst,
Robert Brown, Lucy Campbell, Jason Carey,
Sarah Charles, Romilly Collins, Ruth Cornett,
Jessica Corsi, Nicky Crosbie, Laetitia Delaloye,
Armelle de Laubier-Rhally, Eugenio Donadoni,
Virginie Dulucq, Christopher O'Neil-Dunne,
Arne Everwijn, Nick Finch, Emily Fisher, Peter Flory,
Nina Foote, Christopher Forrest, Giles Forster,
Rebecca Gibson, Zita Gibson, Alexandra Gill,
Keith Gill, Leonie Grainger, Angus Granlund,
David Gregory, Annabel Hesketh, Sydney Hornsby,
Peter Horwood, Adrian Hume-Sayer,
Kate Hunt, Pippa Jacob, Simon James,
Sabine Kegel, Hans-Peter Keller, Tjabel Klok,
Robert Lagneau, Tina Law, Adriana Leese,
Tom Legh, Brandon Lindberg, Murray Macaulay,
Graeme Maddison, Sarah Mansfield,
Nicolas Martineau, Astrid Mascher, Roger Massey,
Joy McCall, Neil McCutcheon, Michelle McMullan,
Daniel McPherson, Neil Millen, Leonie Moschner,
Chris Munro, Beatriz Ordoñas, Rosalind Patient,
Anthea Peers, Keith Penton, Romain Pingannaud,
Sara Plumby, Lisa Redpath, Sumiko Roberts,
Alice de Roquemaurel, Francois Rothlisberger,
Patrick Saich, Tom Scott, Dominic Simpson,
Nick Sims, Clementine Sinclair, Sonal Singh,
Katie Siveyer, Kay Sutton, Rakhi Talwar,
Zain Talyarkhan, Timothy Triptree, Thomas Venning,
Edwin Vos, Amelia Walker, Ben Wiggins,
Bernard Williams, Georgina Wilsenach, Geoff Young

ASSOCIATE DIRECTORS, UK

Ksenia Apukhtina, Giulia Archetti, Sarah Boswell,
Phill Brakefield, Clare Bramwell, Jenny Brown,
Antonia Calnan, David Cassidy, Alexandra Cawte,
Marie-Louise Chaldecott, Helen Culver Smith,
Charlotte Delaney, Freddie De Rougemont,
Grant Deudney, Milo Dickinson,
Alessandro Diotallevi, David Ellis, Amanda Fuller
Pat Galligan, Elisa Galuppi, Julia Grant,
Pippa Green, Christine Haines, Adeline Han,
Daniel Hawkins, Anke Held, James Hyslop,
Wei-Ting Jud, Ouardya Kebir, Guady Kelly, Amy Kent,
Imogen Kerr, Hala Khayat, Alexandra Kindermann,
Julia Kiss, Polly Knewstubb, Rob Leatham,
Antoine Leboutelleir, Stephanie Manstein,
Tancredi Massimo di Roccasecca, Georgie Mawby,
David McLachlan, Lynda McLeod, Melinda Melrose,
Kateryna Merkalkenko, Toby Monk, Rosie O'Connor,
Christopher Petre, Antonia Pitt, Eugene Pooley,
Sarah Rancans, Sarah Reynolds, Meghan Russell,
Pat Savage, Julie Schutz, Hannah Schweiger,
Angus Scott, Charles Scott, Valeria Severini,
Ben Slinger, James Smith, Graham Smithson,
Annelies Stevens, Charlotte Stewart, Iain Tarling,
Sarah Tennant, Marie-Claire Turkington,
Shanthi Veigas, Julie Vial, Anastasia von Seibold,
Tony Walshe, Annette Wilson, Julian Wilson,
Miriam Winson-Alio, Elissa Wood,
Suzanne Yalcin-Pennings, Charlotte Young





CHRISTIE'S

8 KING STREET ST. JAMES'S LONDON SW1Y 6QT